

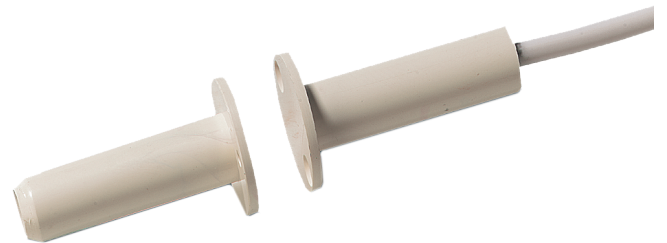
DC106

Inbouwcontact met grote flens, met sabotagelus, 2m, wit, afstand $\pm 12\text{mm}$, NC

The DC106 recessed contacts are designed for applications where the added integrity of mounting screws is needed. The units can be used in wooden and metal frame doors and windows.

Easy Installation

The two mounting holes provide additional strength to prevent the contact and magnet from becoming dislodged due to environmental changes. This can occur when the door or window frames become warped and misaligned from moisture or the settling of a building.



Details

- Flange mounting for positive mounting
- Attractive, added security of recessed installation
- Easy installation
- Standard 2.5 m wire length
- Tamper loop provided
- Built-in resistors available to special order

DC106

Inbouwcontact met grote flens, met sabotageluis, 2m, wit, afstand ± 12 mm, NC

Technical specifications

Allgemein

Application type	Recessed mount
Contact type	NC
Connectivity	4 wires, 2.5 m

Verdrahtet/Drahtlos

Wired-wireless	Wired
Operating gap	23 mm

Physikalische Angaben

Afmetingen	19 x 33 mm
Dimensions magnet	19 x 33 mm
Diameter	9.5 mm
Borehole diameter	9.5 mm
Colour	White

Umweltbedingungen

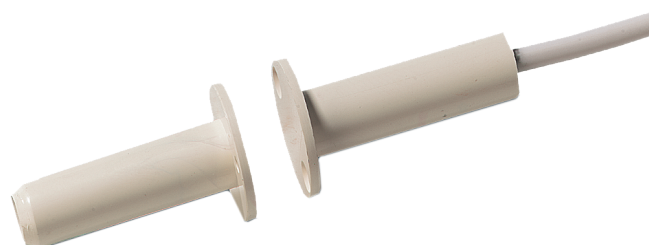
Operating temperature	-40 to +65°C
-----------------------	--------------

Regulatory

EN50131 grade	Grade 2
---------------	---------

General

Mounting screws	Supplied
-----------------	----------



Als een bedrijf van innovatie behoudt Carrier Fire & Security zich het recht voor productspecificaties zonder kennisgeving te wijzigen. Ga voor de nieuwste productspecificaties online naar nl.firesecurityproducts.com of neem contact op met uw verkoopvertegenwoordiger.

Last updated on 8 November 2022 - 9:32