

RTT

1 RELAY REMOTE UNIT AND REQUEST-TO-EXIT BUTTON

RTT is a remote relay control unit that can work with the B100-SA/DINB100-SA biometric readers and the MTPX-MF-SA/DINMTPX-MF-SA MIFARE proximity readers. If secure installation is needed, the biometric reader can be connected to remote relay unit at secured area, which also plays the role of exit push button. It has one relay output and one exit button input.



RTT ARROW



RTT EXIT

bx Black Edition
Product available in black ABS

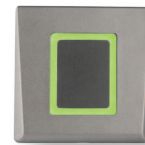
FEATURES

- Output: 1 x Relay (2A/24 V AC/DC)
- Push Button Input: Yes
- Door time: Pulse (1 to 60 s) or Toggle (ON/OFF)
- Button type: electronic touch sensor
- Backlight ON/OFF: Yes
- Buzzer ON/OFF: Yes
- Voltage: 9-14 V DC
- Current Consumption: 60 mA
- Mounting: Surface mount
- Operating Temperature: -20° to 50°C non condensing
- IP Factor: IP65
- Dimension (mm): 92L x 51W x 25D

RELATED PRODUCTS



MTPX-MF-SA



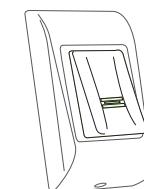
DINMTPX-MF-SA



B100-SA

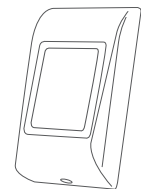


DINB100-SA



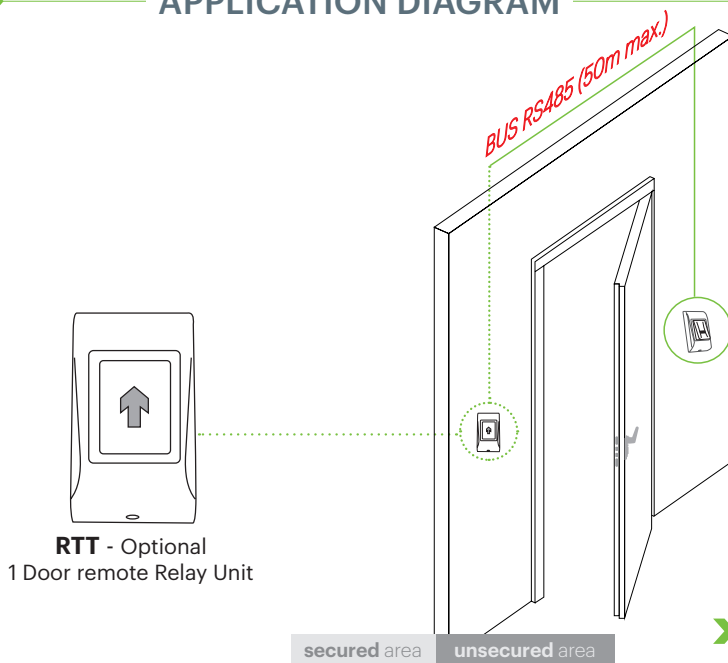
B100-SA
Standalone
Biometric Reader

OR

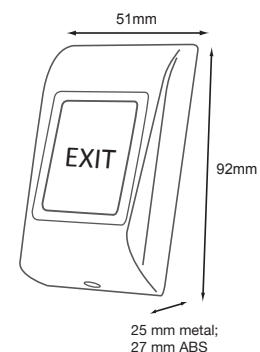


MTPX-MF-SA
Standalone
MIFARE Reader

APPLICATION DIAGRAM



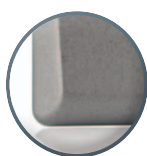
DIMENSIONS



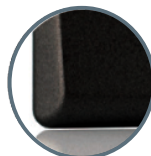
VERSIONS



RTTS
Silver - Metal



RTTC
Charcoal - Metal



RTTBK
Black - ABS

All product specifications are subject to change without notice.

RTT_DS_EN_Ve5