

# BioEntry W2

Outdoor IP Fingerprint Device



Suprema BioEntry W2 is a rugged fingerprint access control device featuring Suprema's next generation biometric technology and security platform. BioEntry W2 provides class-leading performance and security by featuring Suprema's latest fingerprint algorithm coupled by powerful quad-core CPU and LFD(live finger detection) technology. The device also provides added flexibility in system design by featuring multi card reading with dual-frequency RFID technology. Packed in a rugged IP67/IK09 housing with sleek metallic finish, BioEntry W2 is a perfect access control solution for tough environment and outdoor installation.

**suprema**  
SECURITY & BIOMETRICS

# BioEntry W2

## Outdoor IP Fingerprint Device

### Features



#### Best-in-class Performance

- Latest Suprema algorithm
- 1.2GHz quad-core CPU



#### Improved Accuracy & Security

- New advanced Live Finger Detection(LFD) technique
- High-precision OP5 optical sensor



#### Expanded Capacity

- Max. 500k users/1 million text logs
- Large memory: 2GB Flash + 256 MB RAM



#### Rugged Structure

- IK09 impact protection
- IP67 ingress protection
- Ideal for outdoor installation



#### Multi RFID Card Reading

- LF(125kHz), HF(13.56MHz) dual-band
- Reads all card types that HID multiCLASS supports (EM/HID Prox/MIFARE/iCLASS/DESFire/FeliCa/NFC)

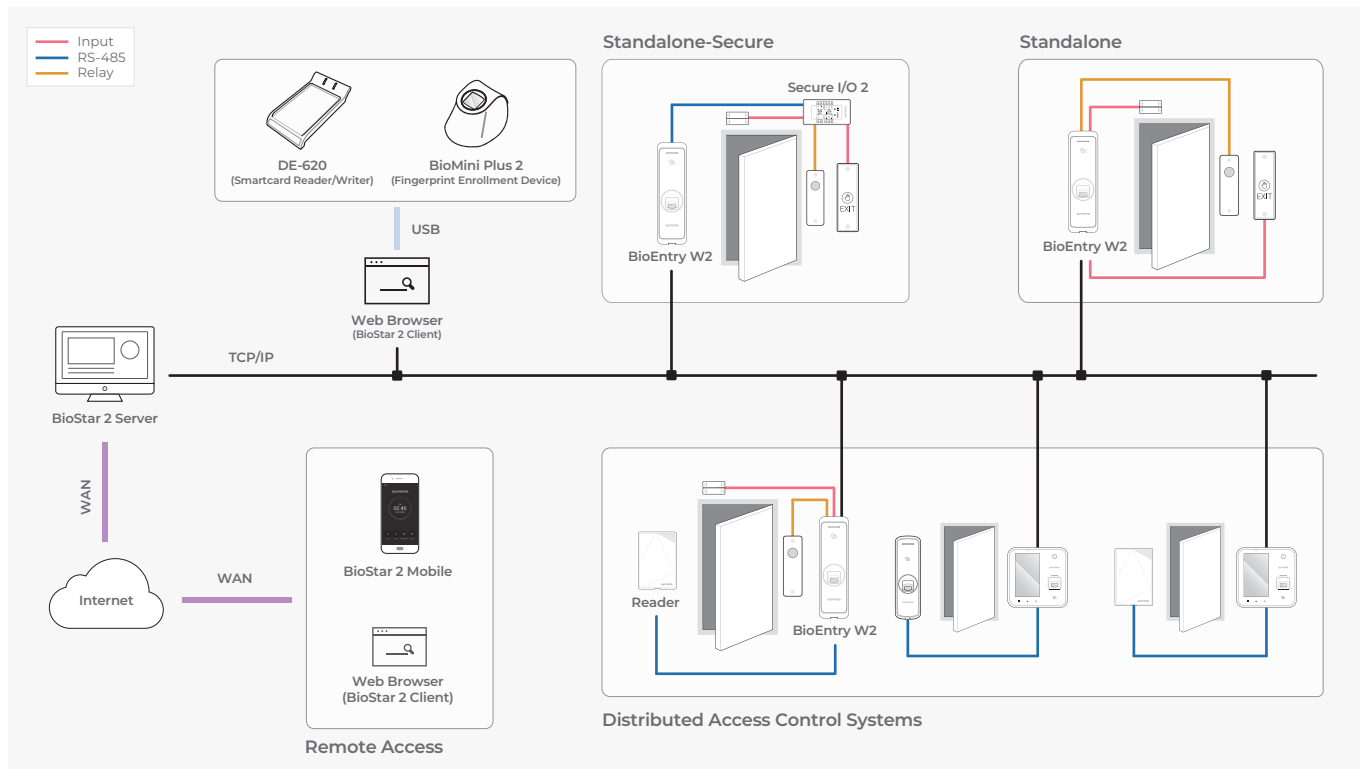
### Specifications

BEW2-OHP, BEW2-ODP, BEW2-OAP do not support BLE.

Model Name	BEW2-OHPB	BEW2-ODPB	BEW2-OAPB
RF Option	125kHz EM, HID Prox & 13.56MHz MIFARE, MIFARE Plus, DESFire, DESFire EV1/EV2/EV3 <sup>1)</sup> , FeliCa	125kHz EM & 13.56MHz MIFARE, MIFARE Plus, DESFire, DESFire EV1/EV2/EV3 <sup>1)</sup> , FeliCa	125kHz EM, HID Prox & 13.56MHz MIFARE, MIFARE Plus, DESFire, DESFire EV1/EV2/EV3 <sup>1)</sup> , FeliCa, iCLASS SE/SR/Seos
Mobile Card	NFC, BLE		
Biometric	Fingerprint		
Sensor Type	Optical Sensor (OP5)		
Template	SUPREMA / ISO 19794-2 / ANSI 378		
Extractor / Matcher	MINEX certified and compliant		
LFD	Supported		
CPU	1.2 GHz Quad Core		
Memory	2GB Flash + 256 MB RAM		
Max. User	500,000 <sup>2)</sup>		
Max. Credential (I:N)	Fingerprint: 100,000		
Max. Credential (I:I)	Fingerprint: 500,000 Card: 500,000		
Max. Text Log	1,000,000		
Max. Image Log	Not supported		
LED	Multi-Color		
Sound	Multi-tone Buzzer		
Ethernet	Supported (10/100 Mbps, auto MDI/MDI-X)		
RS-485	1ch Master / Slave (Selectable)		
RS-485 Communication Protocol	OSDP V2 Compliant		
Wiegand	1ch Input / Output (Selectable)		
TTL Input	2ch Input		
Relay	1 Relay		
PoE	IEEE 802.3af compliant		
Ingress Protection	IP67		
Impact Protection	IK09		
Tamper	Supported		
Power	DC 12V 0.5A		
Operating Temperature	-20°C ~ 50°C (-4°F ~ 122°F)		
Operating Humidity	0% ~ 80%, non-condensing		
Dimensions (WxHxD, mm)	50 x 172 x 43.5 (Bottom) / 38.2 (Top)		
Certificates	CE, UKCA, KC, FCC, IC, RCM, BIS, ANATEL, SIG, RoHS, REACH, WEEE, ETL Listed to UL 294 * UL 294 is applied to only BEW2-OAPB model.		

<sup>1)</sup> DESFire EV2/EV3 cards are supported by having backward compatibility of DESFire EV1 cards. CSN and smart card functions are compatible with BioEntry W2.  
<sup>2)</sup> The number of users registered without any credential data.

### System Configurations



### Suprema Inc.

17F Parkview Tower, 248, Jeongjail-ro, Bundang-gu, Seongnam-si, Gyeonggi-do, 13554, Republic of Korea  
T +82 31 783 4502 W www.supremainc.com



For more information visit our website below by scanning the QR code.  
<https://www.supremainc.com/en/about/contact-us.asp>