

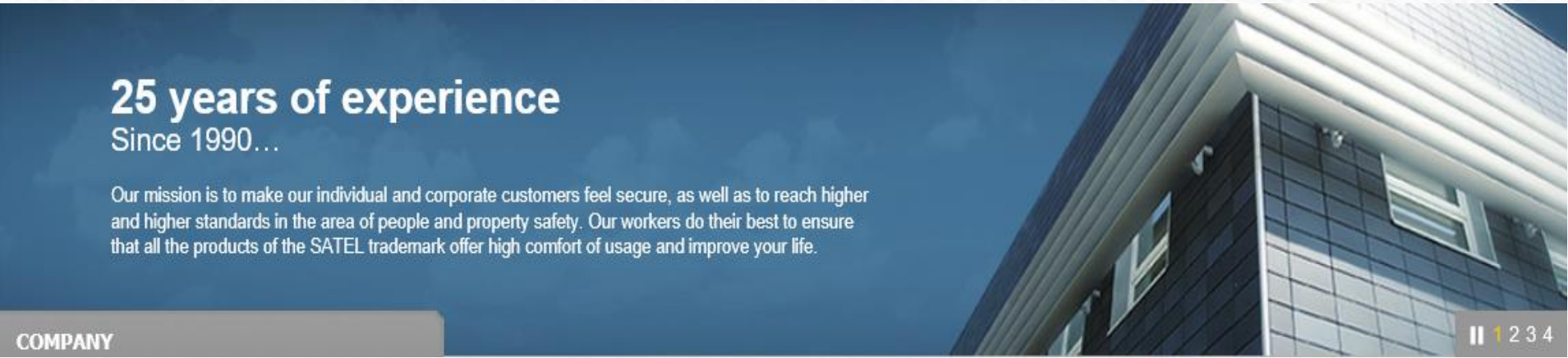
Requirements

The integration requirements of Hikvision recorder and Satel Integra alarm system are as follows:

- 1 The integrated device needs to continuously ask the Integra about the status.
- 2 The activated alarm inputs of the Satel Integra can trigger an event on the NVR, e.g., starting a recording, sending an e-mail, etc., and also sending a push notification to the mobile app.
- 3 Event detection (motion detection, intrusion detection, etc.) on NVR can activate the Satel alarm output like siren or monitoring center.



Introduction to Satel



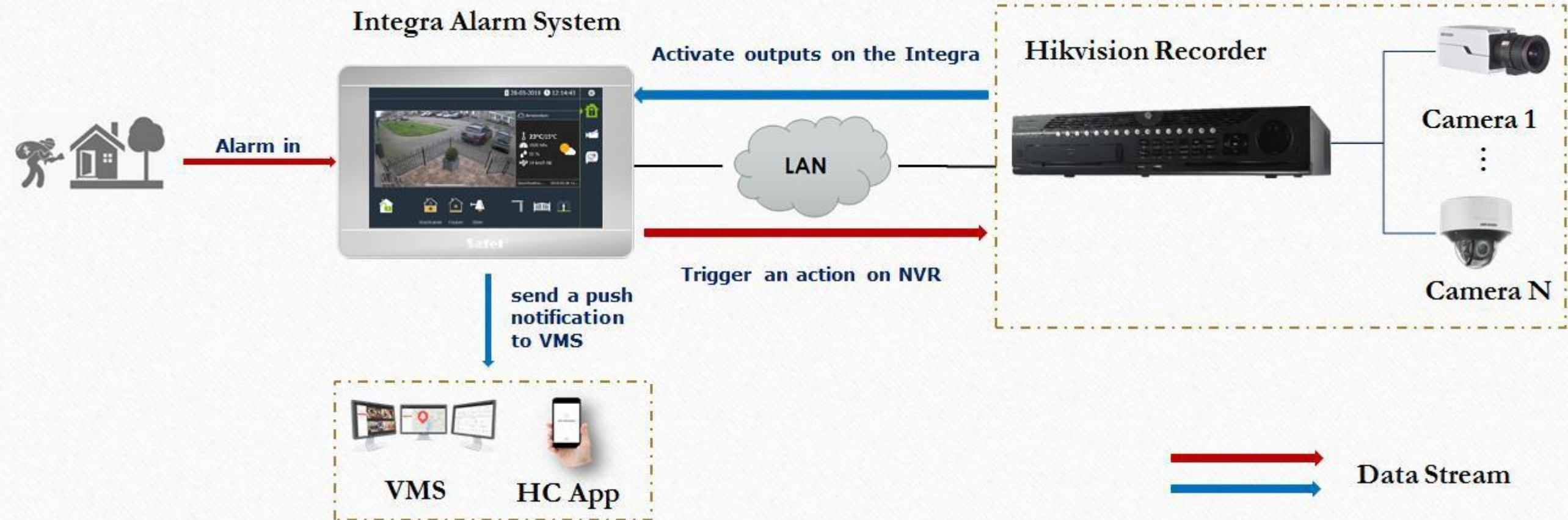
SATEL is a 100% private Polish capital-owned company active in designing, production and sale of high-quality electronic alarm system devices. The product range includes control panels, sirens, and detectors, monitoring stations, radio controllers and switching mode power supplies.



INTEGRA

INTEGRA control panels are modern and advanced devices enabling construction of state-of-the-art security solution, but also access control and smart building systems. Their design is based on experience gathered by SATEL company in more than ten years of designing renowned and reliable electronic alarm equipment.

Solution Architecture



■ Integra Configuration on NVR

NVR support: enable/disable it, configure its IP address, port, user code and get its connection status.

■ Integra Triggers Alarm Actions on NVR

When someone for example opens the front door and triggers the alarm, the Integra alarm system gets an activated input, then it will trigger an event on the NVR so that the NVR can start a recording, send a push notification to the Hik-Connect app and so on. There is an option **“Zone alarm”** which triggers the event only when the Integra is armed.

■ NVR Activates An Output On The Integra

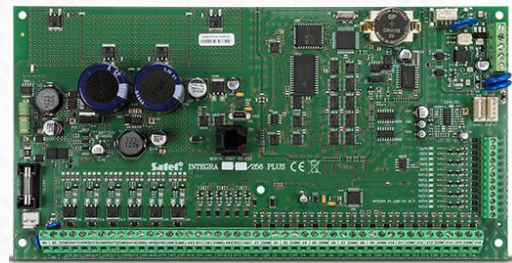
When some event is triggered on the NVR, it also can activate an output on the Integra. Currently the following events support this function: Motion Detection, Video Tampering, Video Loss, Alarm input, Exception Detection and VCA events.

Product Showcase



◆ DS-9600/8600/7700/7600NI-I Series NVR

- 16-ch @ 1080p
- Max. 12 MP camera access
- H.265/H.265+
- Dual-stream recording
- Up to eight 10 TB HDDs connectable



◆ INTEGRA 256 Plus

- Alarm control panel mainboard
- From 16 to 256 zones and outputs.
- Compliant with the GRADE 3 standard



◆ INTEGRA Alarm System

- Alarm control panel mainboard
- Touchscreen keypad
- Zones/Outputs Expansion Modules
- Communication Modules
- Bus Converters
- Access Control Modules