

# MTPX-RS-EH

EM & HID PROXIMITY READER

Elegant and compact 125 kHz proximity reader. The housing, in black ABS, comes with a big rectangular LED. Designed to be installed either outside or inside, it has a RS-485 bus. Its tricolor LED, tamper and buzzer are managed directly by the WS4 controllers. It can read EM or HID 125 kHz cards, depending on the programming selected.



## FEATURES

- Surface mount
- Housing: ABS
- Indoor/outdoor use
- Proximity reader compatible EM 4002/4100 and HID (125 kHz)
- Reading distance: up to 5 cm
- RS-485 output
- Audible and visual feedback
- Green and Red Led: managed by the host \*
- Orange LED: idle backlight (ON/OFF)
- 1 internal buzzer (ON/OFF), managed by the host
- Tamper protection: when opened or dismantled
- Voltage: 9 - 14V DC
- Current Consumption: max 50 mA
- IP 65
- Operating temperature: -20°C to +50°C
- Operating humidity: 5% to 95% RH without condensation
- Dimensions (LxHxW): 51 x 92 x 27 mm

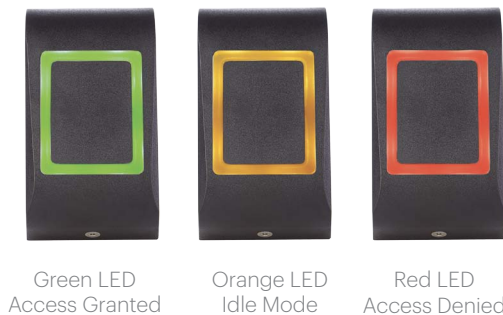
**WS4**

**RS-485**

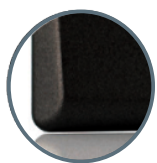
\* Compatible only with our WS4 controllers

## TRICOLOR LED STATUS

With green and red LEDs managed by the host



## VERSIONS



**bx** Black Edition

Ref: MTPXBK-RS-EH  
Black - ABS

## FOBS & CARDS

**EM**  
Fobs & Cards



Ref.	PBX-1E	PBX-1C	PBX-2	PBX-2C
Features	ABS Keyfob EM4100	Leather Keyfob EM4100	0.75mm ISO Card - EM4100	2mm NISO Card - EM4100

## DIMENSIONS

