

LOCKING



**Vortex**



**xpr** Locking™

# Vortex



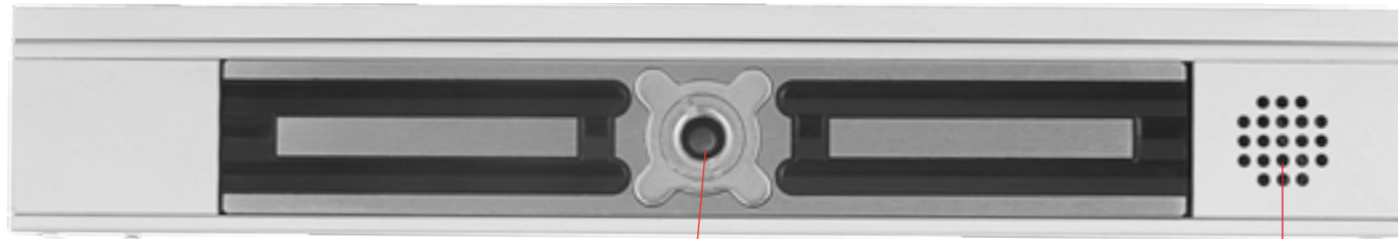
## A hybrid solution with unique features

In 1983, our group introduced a new type of locking system on the European market: the electromagnetic lock!

Since then, our range has widened with the target to always offer the best quality product on the market.

The latest technological progress to date is the association of magnetic holding force and metal resistance. From this combination we have managed to release a hybrid lock with extraordinary performances named the **VORTEX**.





**15000N!**

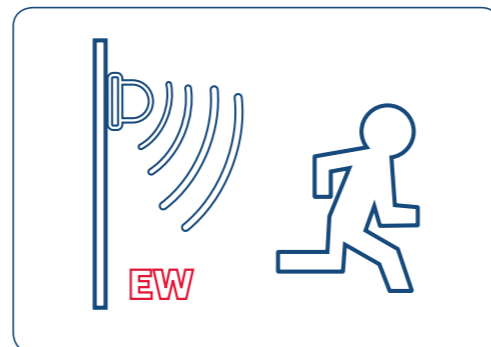
**Technological advance**

The innovation of this hybrid locking lies in a "diabolo" carved in a metal alloy of high resistance. Thanks to a vortex of electromagnetic forces the diabolo is captured inside a hole and will be hold locked into position by the kinetic of the magnetic bloc.



**Unique Early Warning technology**

The Vortex is fitted with a pressure/traction sensor. This EW mechanism allows the Vortex to trigger an alarm BEFORE the access is breached. This is a unique system in the locking world.



**Hybrid locking for emergency exits**

In compliance with norms NF S61 937 and EN 13637, Chap. 7



**Standard label**

The characteristics of our Locking products are represented in a standard label, in compliance with the norm EN 13637, chap 7.

By e.g., the mention 6++ stands for the level of holding force which reaches up to 1500Kg for all the Vortex range.

**15000 kgf/ 15000N!**

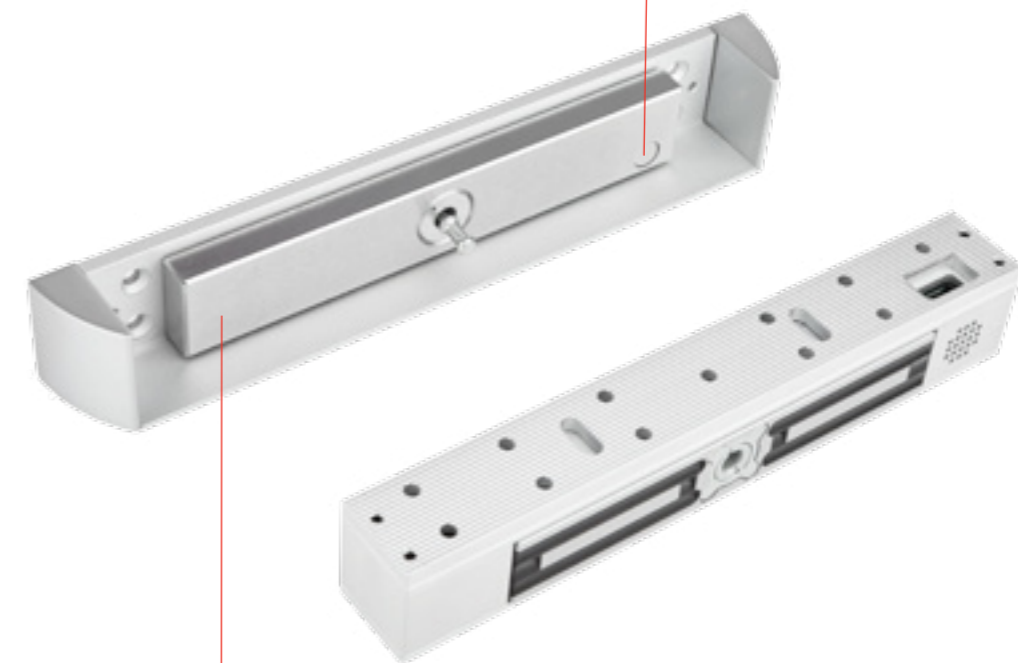
3	9	9	1	2	6++	6++	0	0	D
---	---	---	---	---	-----	-----	---	---	---

Ref: EN 13637:2015 + Corrosion EN ISO 9227: Grade 3

VX2400LP label



**Security sensors**



**No residual magnetism!**

The use of a high quality metal guarantees intrinsically the absence of any residual magnetism. No system of uncertain reliability is added to the product: Neither a push button on the armature plate, nor a kick-off electronics device.

## Two LEDs

For an easier Vortex status monitoring, two LEDs fitted on two different sides of the lock indicate the locking door status.



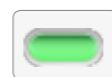
VX 2400LP

## Large LED

A premium range hybrid locking system fitted with a MegaLED improves visibility and supervision from a long distance. This feature allows to verify the door locking status from afar.



Door unlocked



Door locked

## Small LED



Example of Vortex installed, VX2400LP, in a hospital centre.

## 15000N Range



- N** Type\*: Grade 6++ (15 000N / 1 500Kgf / 3 300lbf)
- C°** -40°C to +60°C
- ⚡** 12 V DC / 24 V DC
- IP** 43
- NF** NF S61 937
- EN** EN 13637, chap. 7
- +** Preload

\*: Classification as EN 13637 chap.7 - 2015

## VX 2400LP

Vortex - Surface mount hybrid lock

The VX2400LP Vortex hybrid locking is smaller than a traditional electromagnetic lock but guarantees an extremely powerful holding force. Indeed, it is up to ten times stronger than basic Maglocks of the market. A MegaLed noticeable from long distance confirms the door locking status and a patented system will trigger a local and distant alarm in case of abnormal pressure on the door. So the Vortex is **a unique system which warns of an intrusion attempt before the door being forced opened.**

The Vortex is very reliable offering a **MTBF** (Mean Time Between Failure) **result of 1 000 000 cycles** (Grade 9) of lifetime which is largely superior than most electrical locks on the market.

Ref: VX 2400LP



- N** Type\*: Grade 6++ (15 000N / 1 500Kgf / 3 300lbf)
- C°** -40°C to +60°C
- ⚡** 12/24 V DC
- IP** 43
- NF** S61 937
- EN** EN 13637, chap. 7
- +** Preload

\*: Classification as EN 13637 chap.7 - 2015

## VX 1982-35.5

Vortex - Mortise hybrid lock

The mortise mount version VX 1982 35.5 is designed to meet current requirements of metallic profiles manufacturers and particularly the maximum size tolerated by the profile width. This flush mount Vortex has exactly the same dimensions than traditional 35.5mm mortise maglock. They are therefore compatible with the original cut-outs for retrofit or new installations. All the other functions like the holding force, the monitoring and early warning system with integrated buzzer are identical to the surface model VX2400LP (except the large LED).

Ref: VX 1982-35.5

## 6800N Range



- N** Type\*: Grade 6 (6800N / 680Kgf / 1500lbf)
- C°** -20°C to +60°C
- ⚡** 12/24 V DC
- IP** 20

\*: Classification as EN 13637 chap.7 - 2015

## VX 4400

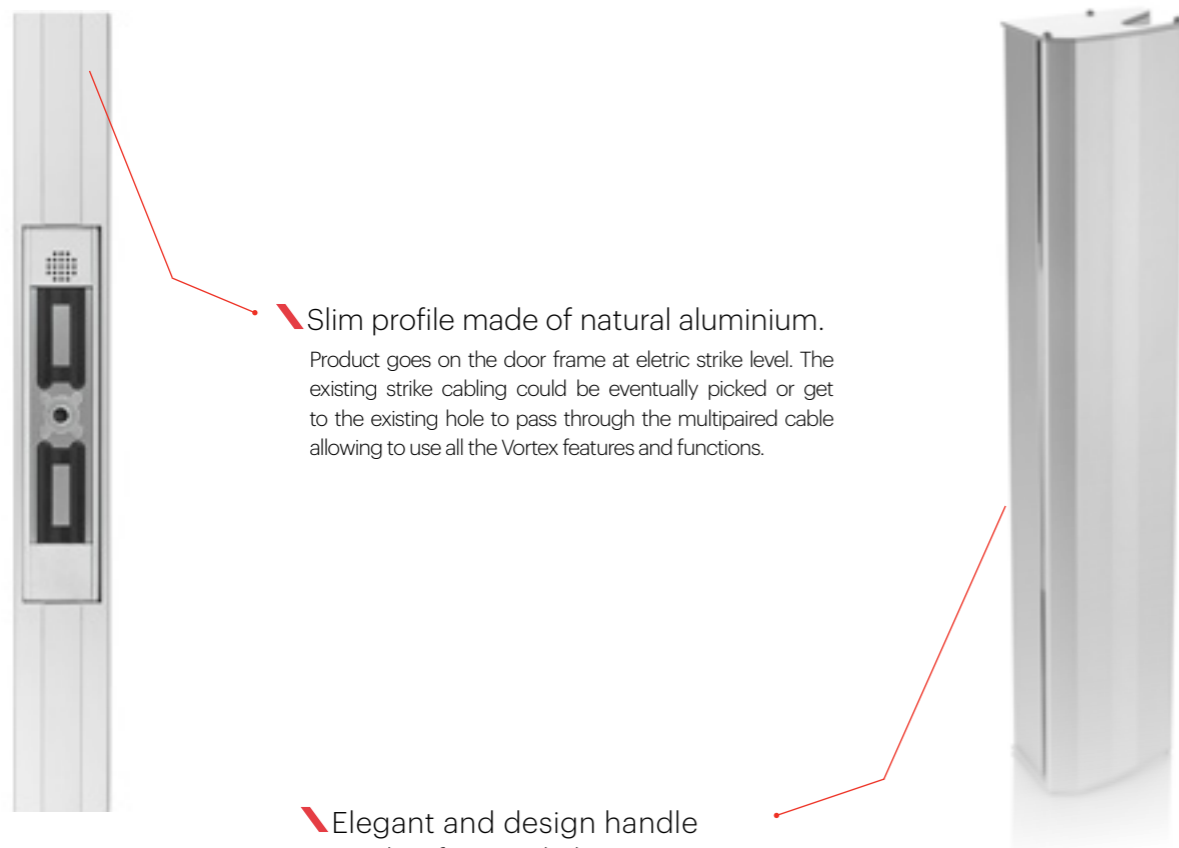
Vortex - Hybrid lock for sliding doors

The Vortex VX4400 is designed for locking and securing mechanical or automatic sliding doors. The locking process is axial and so without constraint. The VX4400 is supplied with a management circuit board allowing the interface with other components from the door like motorisation. Just as for the other Vortex, the monitoring early warning system will trigger an alarm in case of forced door attempts.

Ref: VX 4400

## Door handle - Vortex

The door handle HANDLE HQ 15000N is specially designed to reinforce access security.



### Slim profile made of natural aluminium.

Product goes on the door frame at electric strike level. The existing strike cabling could be eventually picked or get to the existing hole to pass through the multipaired cable allowing to use all the Vortex features and functions.

### Elegant and design handle made of natural aluminium.

The Vortex armature plate is fitted securely on the verso side of the handle with help of a unique vandal proof system.

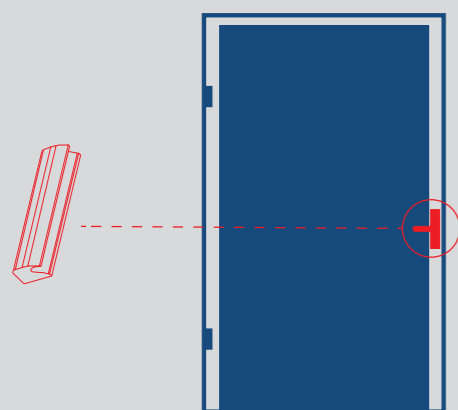


A fast and easy solution to increase security and reliability on existing doors. Most of doors fitted just with a simple electric strike do not withstand force or breaking in for more than a few seconds. Only a simple screwdriver allows to tamper the strike bolt.

The huge Vortex holding force integrated in this handle goes over 1500 Kg (15 000N) and again the integrated early warning alarm system will trigger any forced attempt before the access is breached.

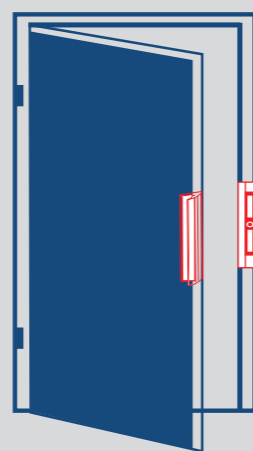
**Easy and very fast installation, invisible cabling and wiring** (installation on metallic doors).

Compatible with any access control systems.



#### Before:

Remove the existing handle or electric strike.



#### After:

Secured installation with Vortex handle.  
High holding force: 15000N



## The Vortex for sliding doors

The VX4400 Vortex brings a real solution to the well-known locking problems of automatic or mechanical sliding doors. The common electrical locking are responsible to many malfunctions.

Most of them, operates perpendicularly to the carriage movement which supports doors casements.

However, the VX4400 works in an axial way without any constraints for a smooth and reliable locking.

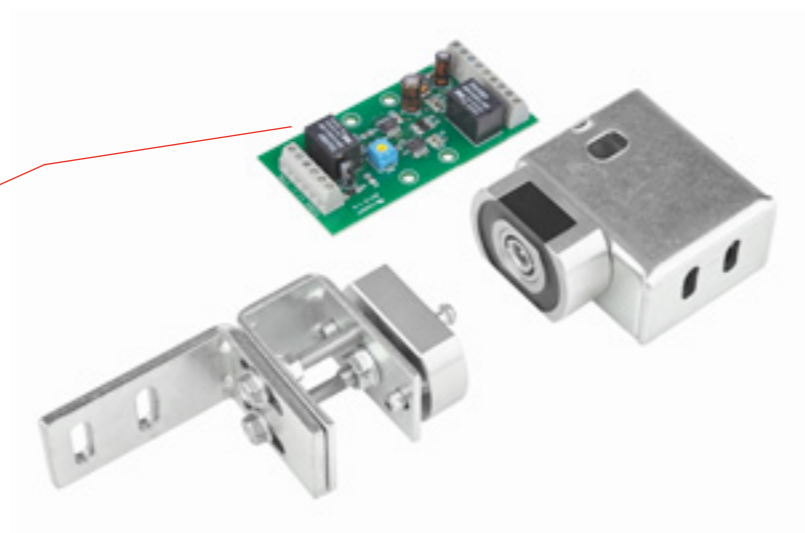


### Vortex technology

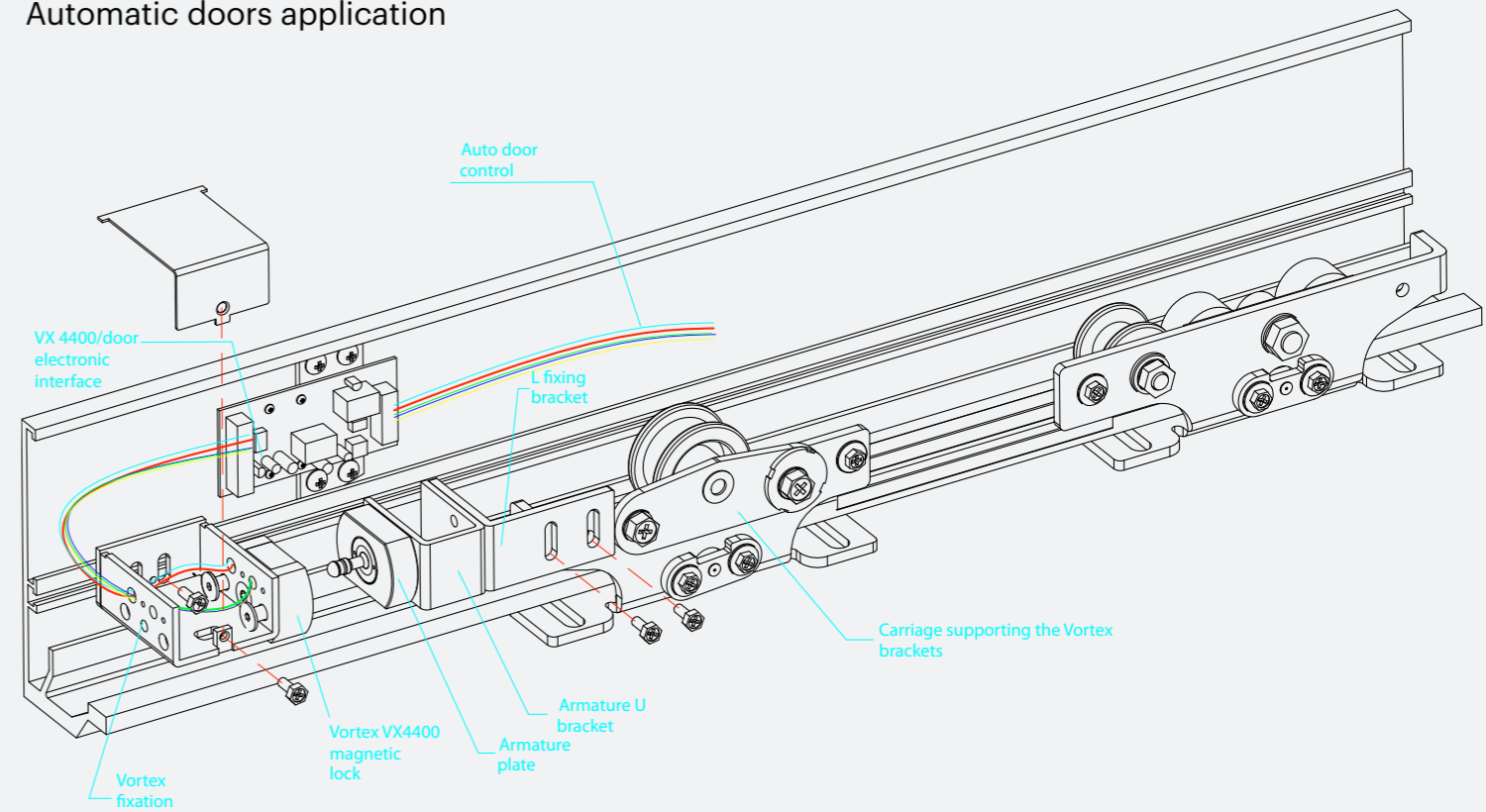
The "diabolo" carved in a metal alloy of high resistance is captured inside a hole and will be hold locked into position by the kinetic of the magnetic bloc.

### Electronic

The VX4400 is supplied with a management circuit board allowing the interface with other components from the door like motorisation. Just as for the other Vortex, the monitoring early warning system will trigger an alarm in case of forced door attempts.



## Automatic doors application



# Vortex



***Visit us on [www.xprgroup.com](http://www.xprgroup.com)***

*We invite you to visit our web site for more information about our products.*

**xpr**