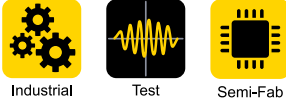


10-100W Low Profile DIN Rail Mount Power Supplies

<https://product.tdk.com/en/power/drl>
www.emea.lambda.tdk.com/drl



The low profile DRL DIN rail power supply series provides a reliable solution for many industrial and building automation applications. With double insulation and a safety Class II input, connection to earth is not required. The NEC Class 2 compliant output, in accordance with UL 1310, allows operation where output currents are to be limited under fault conditions. Available in four power ranges, the DRL series provide a choice of 12, 15 and 24 output voltages

Features

- High Efficiency, up to 90%
- UL1310 Class 2 Compliant
- Low No Load Power Consumption
- Long E-Capacitor Life (>8 years @ 40°C, 75% Load, 230VAC)
- Class II, Wide Range Input (85-264VAC)

Benefits

- Lower Operating Costs, Improved Thermal Performance
- Suitable for Building Automation requiring NEC Class 2
- Energy Saving
- Long Field Life
- Global Application, No Earth Required

Model Selector

Model	Output Voltage (V)	Adjustment Range (V)	Maximum Current (A)	Maximum Power (W)	Efficiency (115/230VAC) (%)	Oversvoltage (V)	UL1310 Class 2
DRL10-12-1	12	-	0.84	10.08W	85 / 85	13.8 - 16.2	Yes
DRL30-12-1	12	12 - 15	2.1	25.2W	87 / 88	16 - 19	Yes
DRL60-12-1	12	12 - 15	4.5	54W	87 / 87	16 - 19	Yes
DRL30-15-1	15	12 - 15	1.68	25.2W	87 / 88	16 - 19	Yes
DRL60-15-1	15	12 - 15	3.6	54W	87 / 87	16 - 19	Yes
DRL10-24-1	24	-	0.42	10W	87 / 87	29 - 35	Yes
DRL30-24-1	24	24 - 28	1.25	30W	88 / 90	29 - 35	Yes
DRL60-24-1	24	24 - 28	2.5	60W	89 / 90	29 - 35	Yes
DRL100-24-1	24	24 - 28	4.2	100.8W	88 / 90	29 - 35	No
DRL100-24-1/C2	24	-	3.67	88W	88 / 90	26 - 30	Yes

Specification					
Model		DRL10	DRL30	DRL60	DRL100
Input					
Input Voltage range	V	85 - 264Vac, 120 - 373Vdc*			
Input Surge Voltage	-	300Vac for 5s			
Input Frequency	Hz	47 - 63			
Input Current (110/230Vac)	A	0.18 / 0.12	0.6 / 0.4	1.2 / 0.8	2.0 / 1.1
Inrush Current at 230Vac (typ) (Cold Start)	A	40	50	60	60
Leakage Current	-	Not applicable			
Power Factor (115/230Vac)	-	0.56 / 0.42	0.6 / 0.4	0.5 / 0.43	0.5 / 0.43
Harmonic Compliance	-	Meets IEC61000-3-2 Class A			
No Load Power Consumption	W	<0.3	<0.3	<0.5	<0.5
Hold Up Time (typ) at 115Vac Input	ms	20	20	20	15
Efficiency	-	See model selector table			
Average Efficiency (1)	%	76.8	83.6	>87	87
Conducted & Radiated EMI	-	EN55032-B Conducted, EN55032-A Radiated			
Immunity	-	See model selector table			
Insulation Class	-	Construction suitable for Class II installation			
Safety Agency Certifications	-	IEC/UL/CSA/EN 62368-1, 60950-1, UL508 Listed, UL1310 Class 2 (2), CE Mark			

Immunity				
Test	Standard	Test Level	Criteria	Notes
ESD	EN61000-4-2	3	A	8kV air discharge
Radiated Susceptibility	EN61000-4-3	3	A	-
Electrical Fast Transient Burst	EN61000-4-4	4	A	-
Surge	EN61000-4-5	3	A	-
Conducted Susceptibility	EN61000-4-6	3	A	-
Magnetic fields	EN61000-4-8	4	A	-
Voltage Dips and Input Interruptions	EN61000-4-11 Class 3 Industrial	0% for 1 cycle	A	-
		40% for 10/12 cycles	B	-
		70% for 25/30 cycles	B	-
		80% for 250/300 cycles	B	-
SEMI F47 Line Dip	SEMI F47	-	-	> 200Vac input

Specification					
Model		DRL10	DRL30	DRL60	DRL100
Output					
Output Voltage Adjustment	-	See model selector table			
Switching Frequency (230Vac 100% Load) (3)	kHz	~103.6	96.9 - 103.8	87 - 94	84.4 - 95.5
Line Regulation	mV	12 - 15V Outputs: 120; 24V Output: 240			
Load Regulation	mV	12 - 15V Outputs: 120; 24V Output: 240			
Ripple & Noise	mV	12 - 15V Outputs: 120; 24V Output: 240			
Temperature Coefficient	%/°C	<±0.02			
Minimum Load	-	No minimum load required			
Overcurrent Protection	%	>105 Hiccup mode with auto recovery			
Overvoltage Protection	V	See model selector table			
Overtemperature Protection	-	-			
Remote Sense	-	-			
Remote On/Off	-	-			
DC Good	-	-			
Indicators & Signals	-	Green LED indicates DC is OK			
Parallel Operation	-	Not available			
Series Operation	-	Possible, see installation manual			

Specification					
Model		DRL10	DRL30	DRL60	DRL100
Environmental					
Operating Temperature (-25°C start-up)	°C	DRL100 (<115Vac): -20 to +71, derate linearly from 100% to 40% load from 40 to 71 DRL100: -20 to +71, derate linearly from 100% to 60% load from 51 to 71 DRL100 (<115Vac): -20 to +71, derate linearly from 100% to 40% load from 40 to 71			
Storage Temperature	°C	-40 to +85			
Operating Humidity (non condensing)	%RH	5 - 95			
Cooling	-	Convection			
Altitude	m	3,000			
Withstand Voltage (For 1 minute)	VAC	Input to Output 3,000			
Isolation Resistance	MΩ	>100 at 25°C, 70%RH & 500VDC			
Vibration (Operating)	-	IEC 60068-2-6, Sine Wave, 10-500Hz, 19.6m/s ² (2G peak) 10 min per cycle, 60 min for all X,Y,Z directions			
Shock	-	IEC 60068-2-27, Half Sine Wave, 39.2m/s ² (4G) for a duration of 22ms 3 shocks for each 3 directions, 9 times in total			
Other					
Weight (Typ)	g	65	120	200	280
Size (WxHxD)	mm	18 x 91 x 55.6	36 x 91 x 55.6	54 x 91 x 55.6	72 x 91 x 55.6
Size (WxHxD)	Inches	0.71 x 3.58 x 2.19	1.42 x 3.58 x 2.19	2.13 x 3.58 x 2.19	2.83 x 3.58 x 2.19
Case Material	-	Flame Retardant Polycarbonate (UL94 V-0)			
DIN Rail Type	-	Suitable for mounting on DIN Rail TS-35/7.5 or TS35/15			
MTBF - Telcordia SR-332 issue 3**	Hours	1,401,366	704,390	369,824	437,110
Warranty	yrs	3			

Notes

See website for detailed specifications, test methods and installation manuals

(1) Measured at 25%, 50%, 75% and 100% load conditions

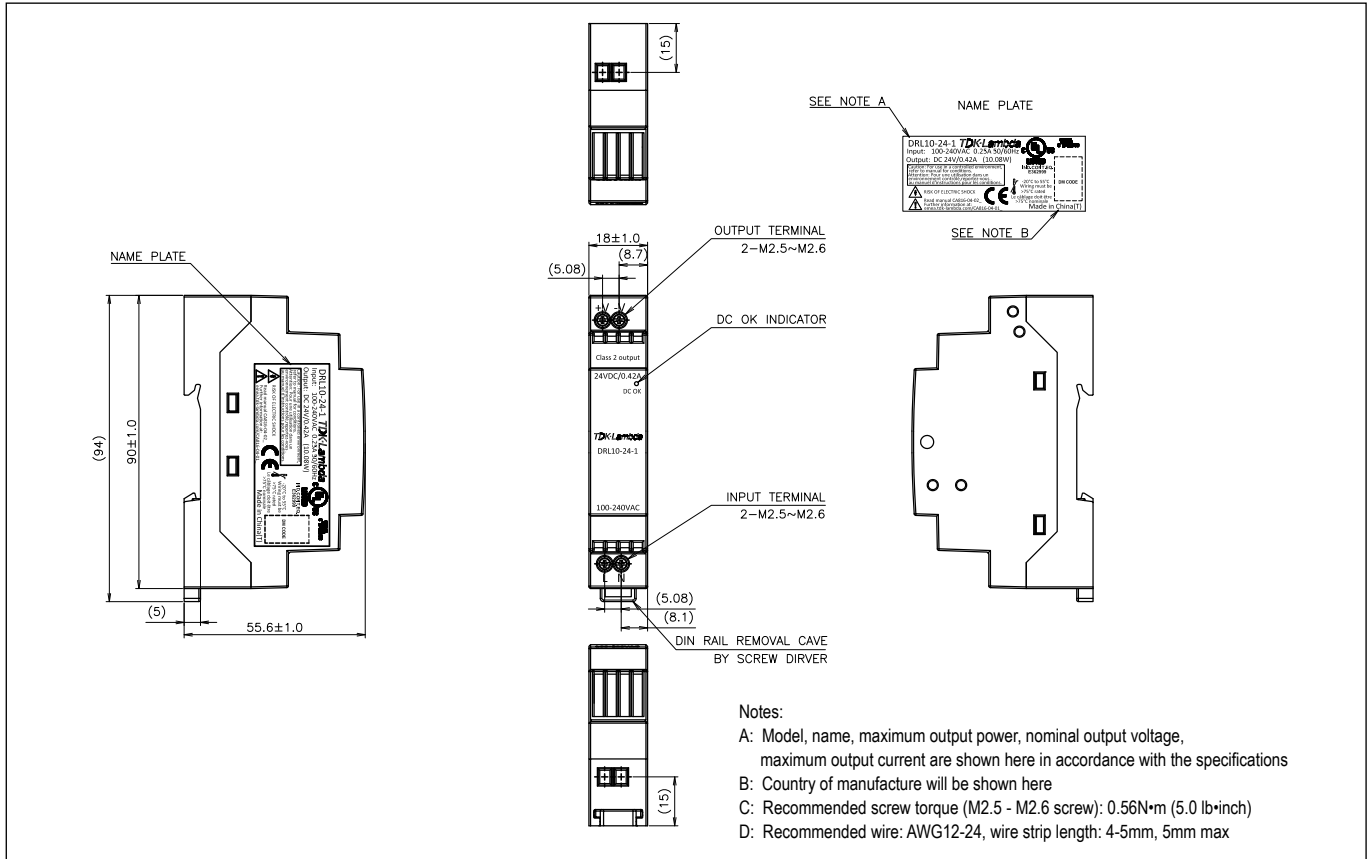
(2) NEC Class 2 in accordance with UL1310. Excludes DRL100-24-1 model

(3) See evaluation data on website

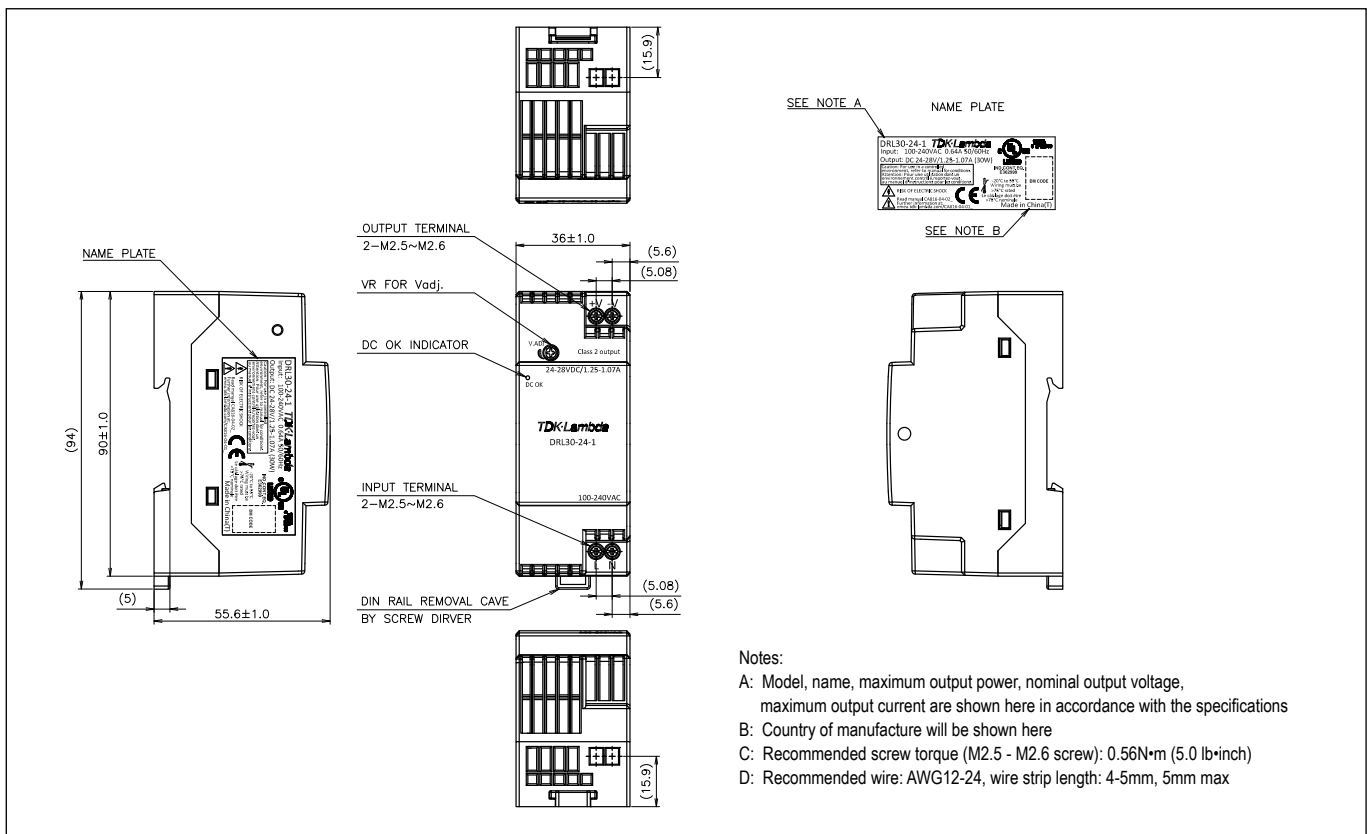
* Safety certified for AC input only

**24V output model, 55°C ambient, full load, 230Vac input

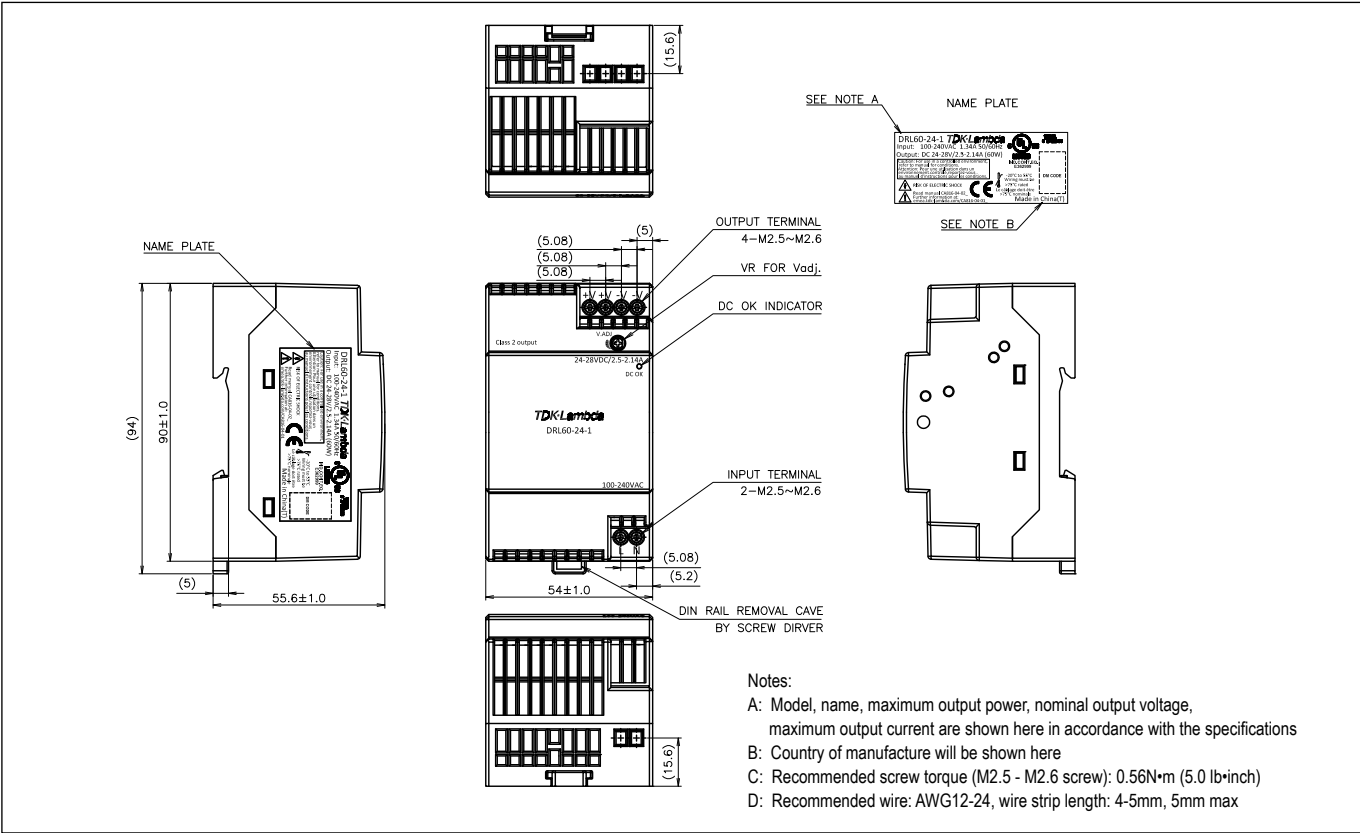
Outline Drawing DRL10-1



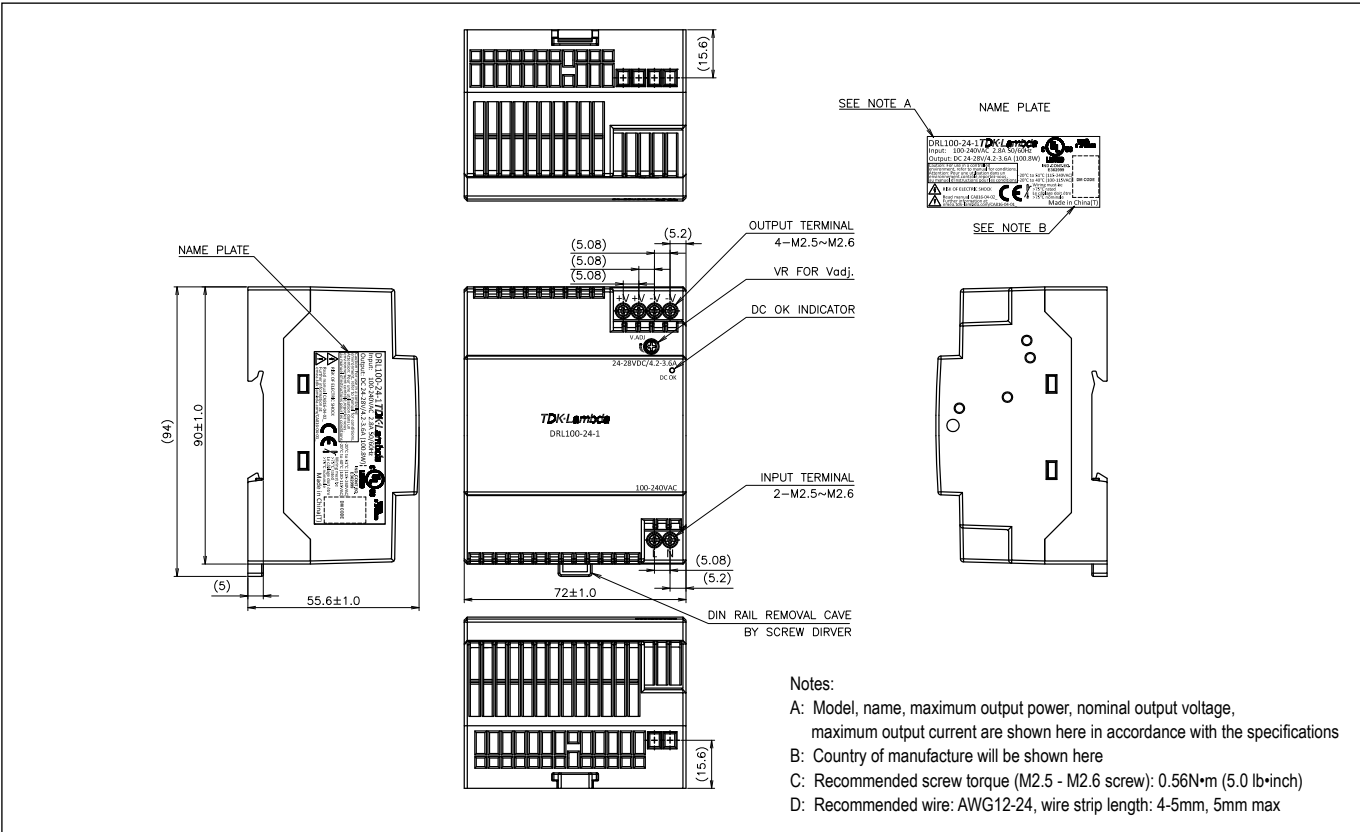
Outline Drawing DRL30-1



Outline Drawing DRL60-1



Outline Drawing DRL100-1





TDK-Lambda France SAS

Tel: +33 1 60 12 71 65
france@fr.tdk-lambda.com
www.emea.lambda.tdk.com/fr



Italy Sales Office

Tel: +39 02 61 29 38 63
info.italia@it.tdk-lambda.com
www.emea.lambda.tdk.com/it



Netherlands

info@nl.tdk-lambda.com
www.emea.lambda.tdk.com/nl



TDK-Lambda Germany GmbH

Tel: +49 7841 666 0
info.germany@de.tdk-lambda.com
www.emea.lambda.tdk.com/de



Austria Sales Office

Tel: +43 2256 655 84
info@at.tdk-lambda.com
www.emea.lambda.tdk.com/at



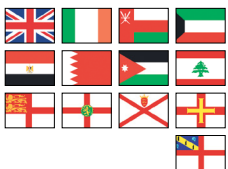
Switzerland Sales Office

Tel: +41 44 850 53 53
info@ch.tdk-lambda.com
www.emea.lambda.tdk.com/ch



Nordic Sales Office

Tel: +45 8853 8086
info@dk.tdk-lambda.com
www.emea.lambda.tdk.com/dk



TDK-Lambda UK Ltd.

Tel: +44 (0) 12 71 85 66 66
powersolutions@uk.tdk-lambda.com
www.emea.lambda.tdk.com/uk



TDK-Lambda Ltd.

Tel: +9 723 902 4333
info@tdk-lambda.co.il
www.emea.lambda.tdk.com/il



C.I.S.

Commercial Support:

Tel: +7 (495) 665 2627

Technical Support:

Tel: +7 (812) 658 0463
info@tdk-lambda.ru
www.emea.lambda.tdk.com/ru



TDK-Lambda Americas

Tel: +1 800-LAMBDA-4 or 1-800-526-2324
powersolutions@us.tdk-lambda.com
www.us.lambda.tdk.com



TDK Electronics do Brasil Ltda

Tel: +55 11 3289-9599
sales.br@tdk-electronics.tdk.com
www.tdk-electronics.tdk.com/en



TDK-Lambda Corporation

Tel: +81-3-6778-1113
www.jp.lambda.tdk.com



TDK-Lambda (China) Electronics Co. Ltd.

Tel: +86 21 6485-0777
powersolutions@cn.tdk-lambda.com
www.lambda.tdk.com.cn



TDK-Lambda Singapore Pte Ltd.

Tel: +65 6251 7211
tts.mkt@sg.tdk-lambda.com
www.sg.lambda.tdk.com



TDK India Private Limited, Power Supply Division

Tel: +91 80 4039-0660
mathew.philip@in.tdk-lambda.com
www.sg.lambda.tdk.com

For additional information, please visit
<https://product.tdk.com/en/power/>

