



# SERIES DH 🔥

## MAGNETIC DOOR HOLDERS



## They protect you

Door holders are activated only in an emergency situation to automatically isolate an area and to prevent the spread of fire.

## Series DH models

Door holders are a fire control measure of vital importance.

They are used as fixed installations in fire doors and keep these doors open until there is a fire alarm.

Doors are closed by automatic or manual activation to prevent fire and smoke from spreading to the entire building.

Our door holders are reviewed by the Applus+ certification company in accordance with current building regulations and validated in accordance with European standards EN1155 and EN14637.

The new modular design makes installation easier and it adapts to any distance from the door.

**DHI**  
60 daN  
Holding force

**DHU**  
60 daN  
Holding force

**DHF**  
60 daN  
Holding force

**XS**  
Extra small



**DHUXS**  
80x80x8

**S**  
Small



**DHIS**  
50x50x25



**DHUS**  
89x80x26

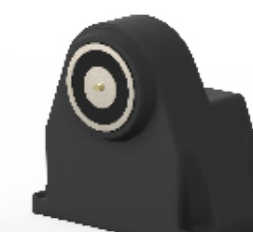
**M**  
Medium



**DHIM**  
60x60x28



**DHUM**  
80x80x46



**DHFM**  
120x120x80

**L**  
Large



**DHUL**  
80x80x66



### Installation position

It is recommended that the installation of door holders for swinging doors is not more than 150 mm away from the upper or lower closing edge of the door.

However, it is important to take into account the certifications of the door manufacturer.

To close the door its disconnection torque at 90° must be between 40 Nm and 120 Nm.

Recommended area of installation



## Models

DHI  DHU  DHF 

## Dimensions

	XS	S	M	L
	Extra small	Small	Medium	Large

## Coils

	F	R	W	Q
Electrical information	24V DC	48V DC	12/24V DC	24/48V DC
Continuous duty DC	ED 100%	ED 100%	ED 100%	ED 100%
Transient Voltage Suppressor	Yes	Yes	Yes	Yes
Nominal resistance	240 Ω	996 Ω	60/240 Ω	245/980 Ω
Power consumption DC (start)	-	-	-	-
Power consumption DC (maintenance)	0,08 A . 24V	0,05 A .. 48V	0,17 A ... 12V 0,08 A . 24V	0,08 A . 24V 0,05 A .. 48V

## Counterplate

	C1	C2	C3	C4	C5
Height and width of the counterplate	55 mm	60 mm	80 mm	80 mm	80 mm
Depth of the counterplate	7 mm	15 mm	23 mm	50 mm	90 mm

## Complement

	E1	F1
Height of the complement	70 mm	190 mm
Width of the complement	70 mm	80 mm
Depth of the complement	41,5 mm	80 mm

## Supplement

	1
Height of the supplement	150 mm
Width of the supplement	104 mm
Depth of the supplement	104 mm

## Colors

	K	W	X
Door holder colors	Black	White	Inoxidable

## Some examples of installation

Door holders are a vital element in case of fire therefore periodic maintenance should be performed to verify its correct operation.



Our articulated counterplate has a 104° swivel range.



Our floor module has a 180° swivel range.

### Release button

All OPENERS & CLOSERS models include a push button for manual door release that allows the door to close without the need of a fire or emergency alarm.

Unlike other push buttons, at OPENERS & CLOSERS we guarantee a lifetime of 25.000 cycles to keep you always safe in case of fire.

The push button must be located in the centre or as far out as possible so that there is easy access for electrical dismantling

### 3 connection openings

For surface mounted installation three 20,5 mm openings were created to install the conduit pipes correctly.

This way the installation is more protected and looks more pleasing.

### Electronic component

A renewed PCBA has been designed to include electronic surge protection and reduce the risk of inoperability.

The terminal strip has been improved diagonally for easier connection.

Models with the Dual solenoid incorporate a switch for manual power changeover.

### Super fast installation

The new design has been conceived to facilitate and improve the installation of the door holder by simply connecting it into the power supply and tightening 4 screws.

¡Installing door holders has never been easier!

