

## PGX03

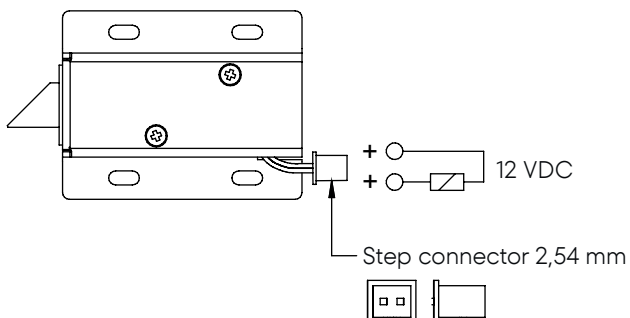
### Technical Data

Type (Embedded / Surface mounted / Glass "U")	S
Delay time	—
Closing delay time	—
Opening delay time	—
LED	—
Door status	—
Bolt status	—
Fire	—

### Electrical Data

(at 20°C)	
Coil type	E
Electrical information	12V DC
Connection	Wiring
Duty DC	ED 100%
Rated operational voltage tolerance	+/- 10%
12V DC (Initial)	—
12V DC (Maintenance)	350 mA
24V DC (Maintenance)	—
Power	4,2W
Transient voltage suppressor (TVS)	—

### Electric connection scheme



### Product certificate

<b>Regulation</b>	—
Normative	—
CPR certificate	—
Classification	—
<b>Normative</b>	—
Classification	—
Low voltage directive	2014/35/UE
Directive (EMC)	2014/30/UE
RoHs Directive	2011/65/UE
REACH regulation	1907/2005