



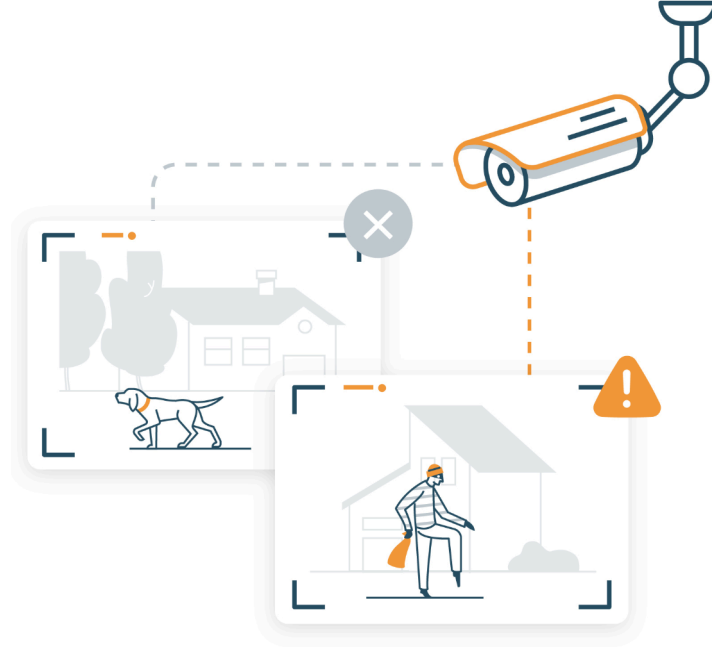
Proactive security made easy

Turn any security camera into an active burglar detector.
Without complex configurations.



Introduction

Transform any security camera into an active burglar detector with Secury360, without complex configurations. By integrating advanced artificial intelligence, you can elevate any surveillance system.



Secury360 presents a **multitude of advantages**:

- Proactive security upgrade
- Remote security management, seamless integration
- Eliminate false alarms to reduce costs
- Operational efficiency for control rooms
- Adaptability and lasting value

Integrating Secury360 with an existing security camera ensures **real-time and on-the-spot analysis of observed images**. This not only minimizes disturbances for users by activating alerts only when a person is detected on their property but also contributes to cost savings. Beyond its role as a person detection system, Secury360 includes **alarm panel features**, simplifying daily operations for users and installers alike.

Control rooms will love you as well, as less false alarms means less work for them, meaning their operators also have more time to prevent real threats.

Here's an overview of **how Secury360 seamlessly integrates the advantages of camera AI, VMS and NVR** for a unified security solution.

	Secury360	Camera AI	VMS	NVR
Proactive	✓	✓	✗	✗
Accurate	✓	✗	✓	✓
Automatic updates	✓	✗	✗	✗
Alarm panel functionality	✓	✗	✗	✗
VMS options	✓	✗	✓	✗

The problem with classic camera detection set-ups

CCTV with motion detection is probably the best known type of perimeter intrusion detection system on the market. They can either be freestanding or mounted on a barrier. **Their great advantage: visual verification of intruders.** Camera detection systems **work with a control room**; qualified personnel either on site or remotely monitoring the images continuously. This enables them to anticipate intruders.

These free-standing perimeter intrusion detection systems work by constantly analyzing their field of vision, watching for movements that would indicate the presence of an intruder. Each frame is stored in the system and successive frames are compared. If the next frame shows a different change, an alarm is triggered to alert the security personnel.

However, standard CCTV with motion detection still has some drawbacks.

CCTV systems still have **difficulty distinguishing people from objects or animals.** Moreover, **certain weather conditions are a challenge for motion detection CCTV.** Lightning strikes can cause unwanted alarms. Rubbish cans and equipment on the premises may fall over.

Fog and heavy rain may obstruct the line of sight. Adaptations are also needed so that these systems also work in darkness. This can be done by installing a light source near the cameras, for example, or by opting for special (thermal) CCTV technology..

For the vast majority of sites and terrains, camera detection is the most suitable solution on the market. They allow for visual verification of reports, and intruders are also immediately captured on screen. This makes it possible to review images (useful if an intruder persists), although with most systems this is only possible if you remove the storage (e.g. a built-in SD card) from the camera. Thanks to the rise of cheap and high-quality digital (IP) cameras, most installations are now digital, and a lot cheaper too. Thus, **camera detection actually has two major disadvantages: false alarms and annoying calibrations.**

PROS	CONS
VISUAL VERIFICATION	MAY BE SENSITIVE TO ENVIRONMENTAL FACTORS SUCH AS RAIN, WIND AND SNOW
VERSATILE	FALSE REPORTS BY ANIMALS
RELATIVELY CHEAP (DEPENDING ON MODEL AND OPTIONS SUCH AS THERMAL)	MUST HAVE DIRECT VIEW
TERRAIN CAN BE UNEVEN AND MAY CONTAIN BENDS AND CORNERS	TIME CONSUMING CALIBRATIONS



How Secury360 takes care of false alarms

Secury360 redefines security with a solution designed to enhance accuracy and optimize security management. At the heart of our innovation is the Secury360 box, seamlessly connecting to camera systems and acting as an alarm panel. Even if you don't have cameras in place yet, worry not – we've got you covered.

This cutting-edge solution deploys advanced Edge and Cloud A.I. technology on captured images. The A.I. takes charge, analyzing and filtering images to discern between humans, animals, and objects.

By doing so, only human detections are relayed, sparing both the control room and end-users from the nuisance of false alarms.

But we don't stop there.

To discern whether an object is a vehicle, human, animal, or anything else, we employ a unique training process for camera systems. This training empowers the system to detect and classify objects with precision, offering insights into a myriad of object classes and contexts.

The result?

Elevated system accuracy that ensures your security measures are tuned to real threats.

And that's not all – for quick verification of alarms, our solution sends 10-second video clips to control centers. This quick verification process adds an extra layer of efficiency, making **your security system not only accurate but also responsive in real-time.**

Customers who take time to understand the story of Secury360 and see the working demo are immediately convinced. If you see it, you buy it... is what we say around here.

Jan de Wilder, Manager
GDW Security

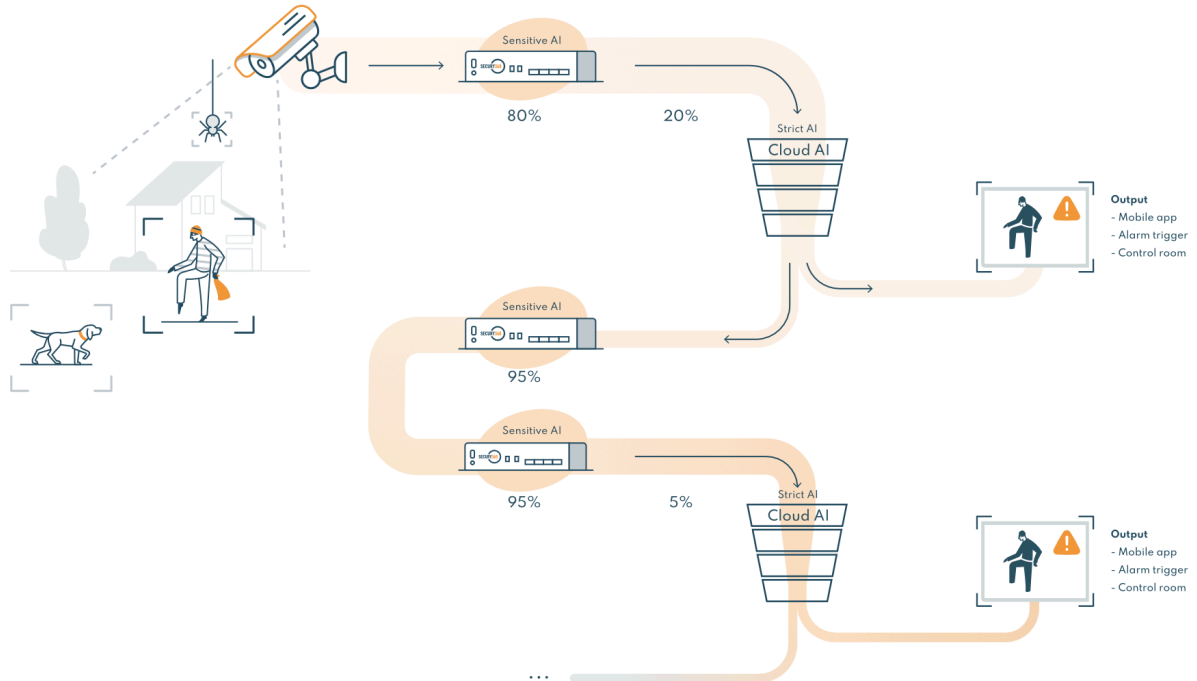
Proactive security made easy



That's great, but how does Secury360 actually work?

The Edge A.I. gradually gets to know your terrain, learns, and gets better at recognizing intruders. Thus, its accuracy increases over time, and the number of false alarms continuously decreases, until the Secury360 box perfectly filters false alarms.

Until then, our cloud A.I. comes to the rescue, filtering once more for all alerts that get past the box.



So, what is this box exactly?

You don't build a castle on sand. You need a strong foundation. That's why our award-winning Secury360 box contains the best hardware, which can also run VMS like NX. All at once, no extra PC needed.

The box software is compatible with all types of cameras - they don't even have to be smart. As long as they are high definition, end- users can get started!

It also consumes very little bandwidth (3.2GB standard, 2GB when 4G is active), as the box only sends 10 seconds of footage to the control room.

Did we mention the box can be updated remotely?

The result: A future-proof solution that only gets better over time.

And best of all, our solution was created with ease-of-use in mind. Installing the box and connecting it to a control room or installer's IT system is as simple as it gets.

No wonder they love Secury360!



- Low power and bandwidth consumption
- Easy integration
- Future-ready camera expansion from 6 up to ...
- VMS function with NX
- Expanded storage capabilities with 3.5" HDD with drive bay
- Passive cooling for enhanced reliability and noise reduction
- Custom motherboard
- Internal IO
- 4G on-board
- 5 years warranty

Secury360 is proud to be a **Made in Belgium** security solution.

Our commitment to quality and innovation extends from the heart of Belgium, where we manufacture our hardware, the Secury360 Box.

We've also developed our partner platform and mobile app, ensuring that every aspect of Secury360 reflects the dedication and expertise of our Belgian roots.

How do I manage the system with the box?

The Partner Portal is the nerve center for streamlined security management.

Designed with installers and operators in mind, this portal empowers users with efficient control over the Secury360 system.

Through the Partner Portal, managing settings, conducting updates, and optimizing security parameters can all be achieved remotely, providing unparalleled convenience.

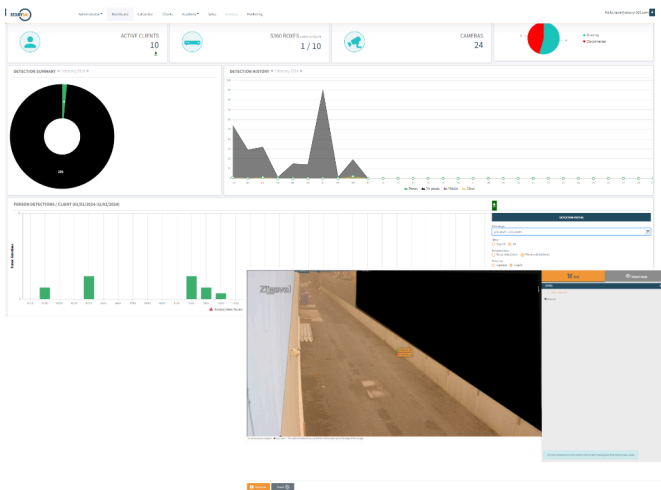
Want to view the portal in person?

Our team is happy to give you a demo!



Some time-saving features our partners value:

- Manage cameras directly from the portal
- Automatic monitoring/disarming of the box according to the time of day
- Assign roles to users with different permissions
- Analysis and graphical overview of detections & history
- View detection clips up to 30 days in retrospect
- Log with time stamp of each event, change, detection by the box



How does Secury360 function as an alarm panel?

In the era of smart technology, we understand the need for on-the-go accessibility and ease.

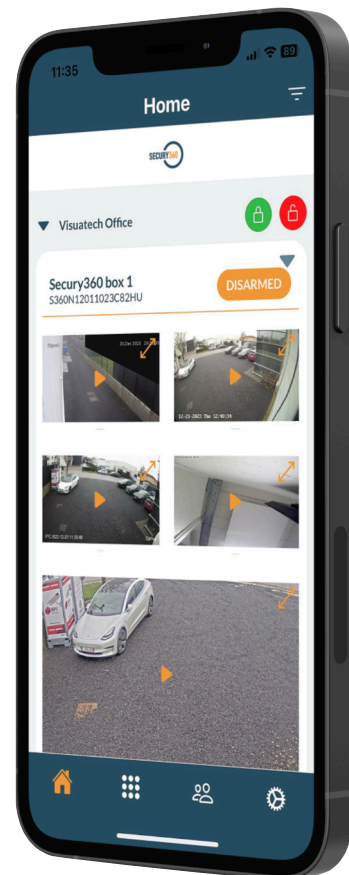
The Secury360 app is the epitome of both.

Tailored for the modern user, it offers instant access to security insights, real-time notifications, and streamlined control. Whether it's adjusting settings, reviewing footage, or getting instant alerts, everything you need is at your fingertips.

Built with a user-friendly interface, the Secury360 app ensures that end-users (and by extension control rooms) can respond swiftly to security concerns. The app is more than just an extension—it's a revolution in the way security is managed and monitored.

Features that complete the security experience:

- **Instant notifications:** Receive alerts on the go. Respond faster and smarter.
- **Footage review:** Access and review key footage, anytime, anywhere.
- **Settings control:** Adjust security parameters effortlessly to fit your needs.
- **Geo-fencing:** Automatic activation and deactivation based on your location.
- **User profiles:** Assign and manage access for family members or staff.
- **Real-time insights:** Stay informed with live updates on security events.
- **Sleek interface:** Navigating security has never felt this smooth and intuitive.



Blending state-of-the-art technology with user-centric design, the Secury360 app is the touchpoint that redefines security for the modern age.



Synergizing advantages with Secury360

In a market saturated with security solutions, Secury360 stands out as an unparalleled innovator, offering a synergy that sets us apart from the competition.

In essence, what sets Secury360 apart is not just the individual excellence of our components—the Secury360 Box, Partner Portal, and App—but the harmonious synergy created when these elements work together.

This cohesive approach eliminates the frustrations commonly associated with security solutions, offering users unparalleled convenience, efficiency, and peace of mind.

Unveiling the differences: a detailed look at Secury360 and other security systems

	CCTV WITH S360	CCTV / CAMERA AI	ACTIVE INFRARED SENSOR SYSTEM	GROUND DETECTION SYSTEM
Proactive	Yes	No	Yes	Yes
Accuracy	Very high	Low	Very low	Very low
Calibration	None	Yes	Yes	Yes
Updates	Remote	On site	On site	No
Alarm panel functions	Yes	No	No	No
VMS options	Yes	Yes	No	No
Verification	Visual	Visual	No	No
Installation	Easy	Easy	Easy	Difficult
Cost	€€	€	€€	€€€

To the edge: How is edge computing transforming the way we approach video surveillance?

The number of devices at the edge of our security networks is growing, and they play an increasingly critical role in our safety and security. **The advantage of edge computing is that more capacity is built into the connected device itself, so the information processing power is as close to the source as possible.**

For a video surveillance network, this means more actions can be performed on the cameras themselves. The role of A.I., machine learning and deep learning in video surveillance is growing, so **we can 'teach' our cameras to be much more intuitive about what they are filming and analyzing in real time.** For example, is the vehicle in view of the camera a car, a bus or a truck? Is it an animal or a human being heading towards your building? Is it an object in the path, or just a shadow?

These insights will alleviate the human input needed to analyze data and make decisions. Ultimately, this should **speed up response times - potentially saving lives - and provide valuable insights that can shape the future of our buildings, cities and transport systems.**



Thanks to Edge, your detection system learns continuously

At first, the edge analysis of surveillance camera images only shows that something or someone is moving. After further analysis by video management systems on centralized servers (at Secury360 this is done by our Cloud A.I.), a human being is (for the time being) needed to interpret what it is exactly, and whether it poses a threat or security risk. **This role is taken up by a local alarm center.**



Edge & Outdoor Detection: What are the advantages of analysis "at the edge"?

The increased accuracy of Edge A.I. - and its ability to distinguish between multiple object classes - immediately reduces the number of false positives.

This means that less time and resources are needed to investigate these false positives. Not insignificant, since **98% of the alarms a monitoring center receives are false**, and every false alarm that slips through their hands **costs them money**. And more importantly, the more false alarms there are, the **greater the chance that the control room will respond too late or not at all to a real burglary attempt**.

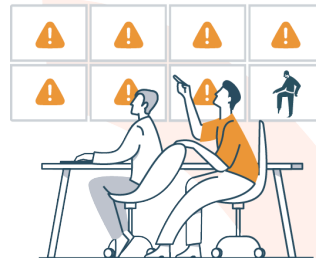
Edge A.I also allows your outdoor detection system (like Secury360!) to be **proactive**. Intruders are detected immediately upon entering the premises, and a faster and appropriate response is provided (than similar systems without Edge A.I).

Another important advantage of Edge analytics we have already mentioned is that the **analysis takes place on the highest quality video**, as close to the source as possible. In a traditional model - when the analysis takes place on a server - video is often compressed before it is transmitted, so the analysis is performed on lower quality video. In the case of an actual break-in, and the subsequent report to the police, this can make the difference between useful evidence - or just not.

In addition, when analytics is centralized - i.e. takes place on a server (on the cloud) - and more cameras are added to the solution, more data is transferred, requiring more servers to perform the analytics. By implementing powerful analytics at the edge of the network, **only the most relevant information is sent across the network, reducing the load on bandwidth and storage**.

Choosing outdoor detection with Edge A.I. delivers results from the moment of installation, and that is just the beginning. As the A.I. continually learns, your outdoor security system will only become more accurate, and security-related costs will only decrease. The possibilities are truly endless.

Control rooms without Secury360



Control rooms with Secury360





Conclusion

As you can see, the Secury360 solution has a number of benefits for every stakeholder. End users might not care about the superior processing or analysis capabilities that our Edge & cloud A.I. technology provides. But they will be thankful for the absence of false alarms, and the ability to detect and deter intruders before they cause damage. By offering Secury360, you'll become a preferred partner for any control room, giving them the breathing room to focus on what truly matters - identifying threats as soon as possible.

This revolutionary technology allows our Secury360 box to **transform any camera system into a proactive security system that acts as an alarm panel**. Because the Edge A.I. keeps learning, any property is effectively "future-proofed". And the cherry on top: a price tag that other solutions can only dream of.

Don't believe us? We're more than happy to set up a demo. Give us a call or e-mail us at sales@secury-360.com.

Advantages of Secury360:



High Accuracy



Cost Saving



Easy to use



Next-gen tech



Mobile App



Businesses & homes

Managing installations remotely is a great asset of Secury360. The technician does not have to spend a lot of time on site installing the camera system. We can remotely draw privacy masks, draw zones, manage settings and so much more.

Axel Guldentops, Manager
AEW Security



Our Partners

We believe that the right security is supported by an ecosystem of stakeholders committed to excellence. That's why we are building a network of selected partners.

We work together with all major camera brands, integrate with an increasing number of technology partners like Network Optix and Genetec.

And we haven't even mentioned our rapidly growing network of installers and control rooms across the globe.

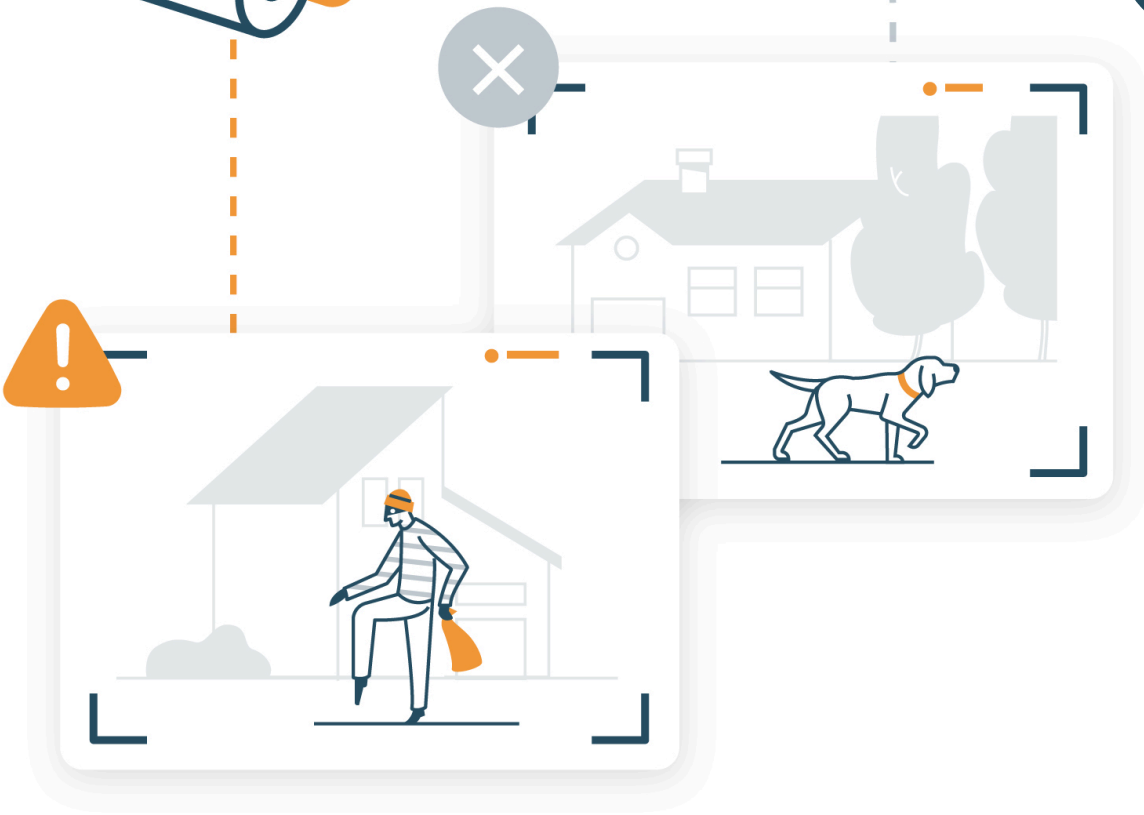
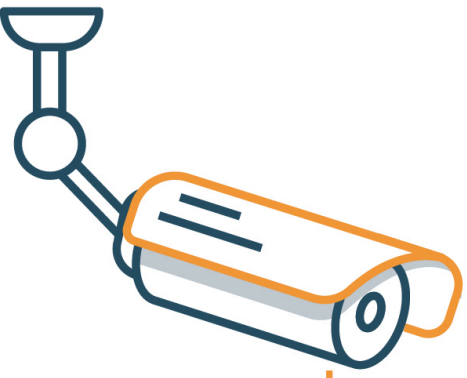
We can't list them all, but you might recognize some of these names:



Go to our website and discover all our partners and their experience with Secury360.



Secury-360.com



Reach out to us for an in-depth exploration of how Secury360 operates.



[Secury-360.com](https://www.secury-360.com)

Contact us at:
info@secury-360.com
+32 (0)11 36 26 46

