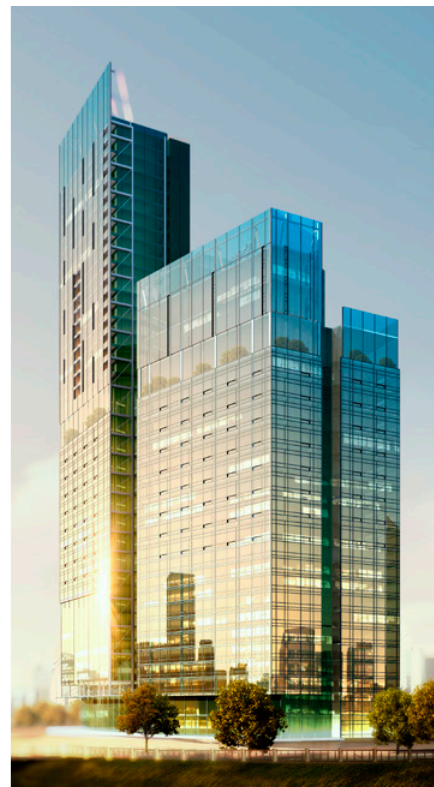
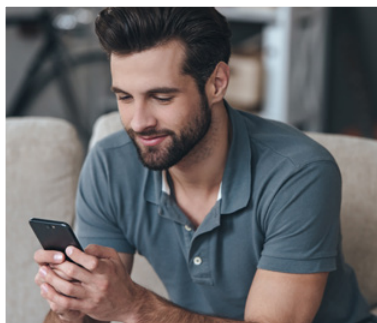


# Integra

ALARM SYSTEM + BUILDING AUTOMATION



**Security and comfort**



# INTEGRA – combining an alarm system and building automation perfectly

Implementation of intruder protection and building automation functions within one multi-functional system is an extremely effective solution. A system based on the INTEGRA intelligent alarm control panel will be appreciated by demanding customers – people who value a comprehensive approach and expect easy, user-friendly system operation.

Be it a **house, apartment, office, museum or restaurant** – an alarm system based on the INTEGRA control panel will make you feel safe, secure and comfortable in any space.



## Security

- intruder alarm
- reaction to water leaks or flooding
- detection of the first signs of fire or gas leaks



## Comfort

- automatic control of various devices and/or systems
- running entire task scenarios with a single command
- convenient local and remote control of security and building automation



## Savings

- using the same devices to implement security and automation functions
- effective management of various devices / installations makes e.g. energy savings possible (by automatically switching off unnecessary loads)
- the possibility of integration with various installations, both new and already existing in the building

I ♥ INTEGRA  
security and comfort at your fingertips

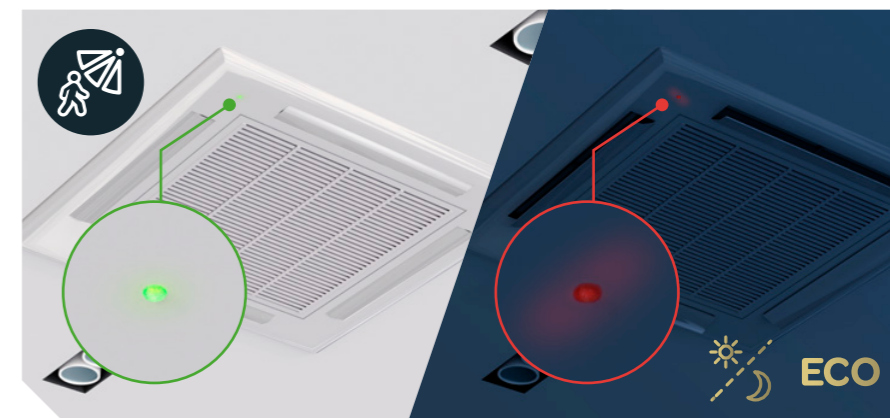
How can INTEGRA automate buildings?

Be inspired by our examples.



## Smart lighting

- detection of a moving person or opening door by the motion detectors will turn on the lights in that room or its immediate surroundings
- owing to the dusk sensor, selected lights will turn on at sunset and turn off at dawn
- you can quickly run the entire lighting scenarios, such as tapping the icon in the application will turn on the garden lanterns in the right order, and then the driveway lighting will come on as well
- arming the system can automatically turn off all unnecessary lights
- motion detectors with a built-in LED light source can serve as emergency lighting activated by motion, which will facilitate moving around the premises in the event of a power cut



## Perfect temperature

- the system can control the operation of the heating / air conditioning system, maintain the room temperature at the preset level and adjust it, e.g. to the time of day
- as soon as the alarm system is armed and everyone has left the protected premises, the air conditioning and heating can switch to the economy mode
- the indoor temperature can be changed at the preset time (timer), e.g. before the residents return home
- opening a window can turn off the heating / air conditioning in the room to prevent wasting energy
- if the temperature exceeds the set point (e.g. it is too low or too high), the indicated people may be notified of this situation

## Roller shutter/blind control

- you can quickly and easily raise or lower the roller shutters/blinds throughout the home, by using the application, touchscreen keypad or the keyfob
- opening the window fully or partially may automatically raise the roller blind mounted on it, thus allowing easier inflow of fresh air
- the roller shutters / blinds can go down automatically after dusk falls and go up at sunrise
- as soon as the alarm system is armed, the indicated roller shutters/blinds can be automatically lowered, depending on the arming mode
- awnings, blinds and curtains on an electric curtain rod – their location can also be controlled by an intelligent alarm system





## Open sesame!

- you can open an entrance gate or garage door by using your keyfob, clicking on the icon in the app, as well as by calling the number of the control panel or sending an SMS to it
- gates can close automatically when dusk falls or after the alarm system is armed – just like roller shutters/blinds
- when there is nobody at home and a courier with an important package arrives – you can remotely disarm the garden alarm system and open the gate so that he can leave the parcel on the porch
- guests arrived before you could get back home – you can remotely disarm the alarm and open the gate so that they do not have to wait in the street
- you are not sure if you closed the gate – check the appearance of the gate icon in the application (closed or open) or enable the camera preview



## A beautiful green garden

- the control panel can start watering automatically according to the preset schedule
- watering will not turn on when sensors connected to the control panel indicate that it is raining or the sun is scorching hot
- if your lawn needs watering, you can turn it on using the keyfob or the mobile application
- you will not forget to turn off the sprinklers and you will not waste water – the system will automatically cut off the water supply after the preset time elapses
- if motion detectors in the garden detect people, such as children who have run out of the house, watering will be paused



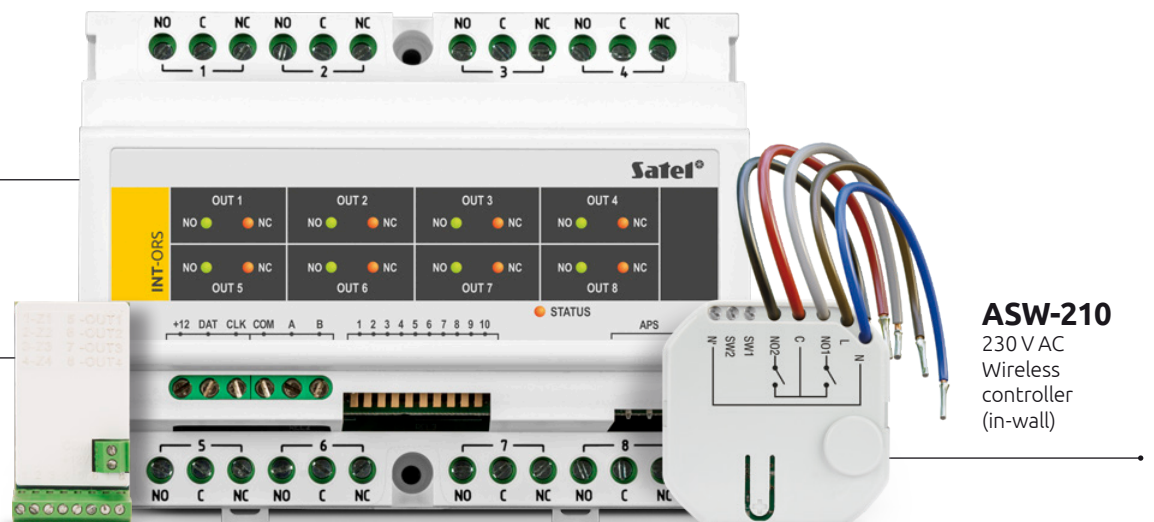
And many more...

## Elements of smart buildings

Control of various electrical devices can be implemented using a number of modules, both wired and wireless, that can work with INTEGRA control panel.

**INT-ORS**  
230 V AC Output expander

**ACX-210**  
Low voltage  
mini I/O expander



**ASW-210**  
230 V AC  
Wireless  
controller  
(in-wall)



## Convenient local control

Touchscreen keypads with graphic interface, which are used together with the INTEGRA control panels, owing to the intuitive operating system, provide easy access to even the most complex functions. You can use these keypads, for example, to execute MACRO commands – with just one touch of an icon or virtual button, you can run the entire programmed scenario.



Available in black (INT-TSI-B) and white (INT-TSI-W) enclosure.

## Code-free control? Why not!

The ability to control the system without having to enter any user code, using remote control keyfobs or proximity cards, are solutions designed for everyone's comfort, even users as children or the elderly.



You can keep the proximity tag with your keys so that you always have it close at hand.

The contactless card is the size of a credit card – you can carry it, for example, in your wallet.



## Mobile management centre

The intuitive INTEGRA CONTROL application allows remote control and supervision of the system from anywhere in the world, where there is Internet access. All you need to run individual functions, including macro commands, is a smartphone or tablet. You can also send SMS messages to the control panel.

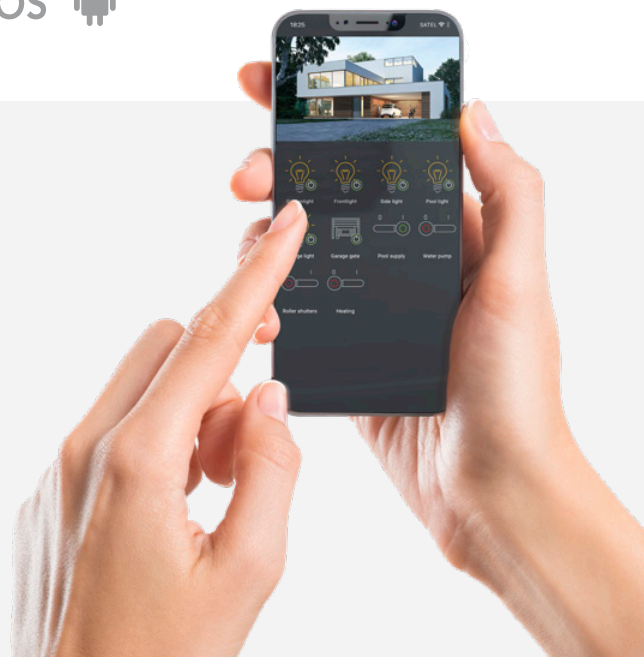


## Watchful eye of the camera

Both on the INT-TSI keypad screen and in the INTEGRA CONTROL application it is possible to display the image from IP cameras. With this feature, you can see what is happening on your property at any time. Also, when you get an alarm notification, you will be able to verify the source of alarm by turning on the camera preview on your smartphone screen.



Full-screen preview

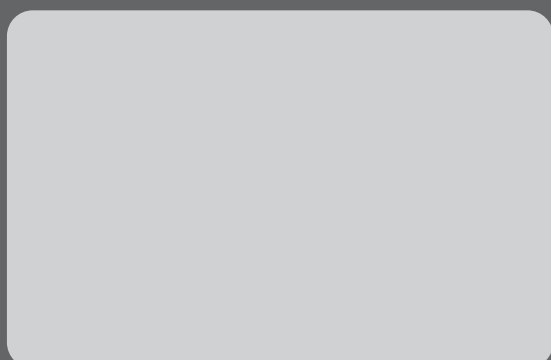


Turn the page and find examples of using the **INTEGRA** control panels in a smart building.



Budowlanych 66, 80-298 Gdansk, Poland  
tel. +48 58 320 94 00; fax +48 58 320 94 01  
e-mail: trade@satel.pl

[www.satel.eu](http://www.satel.eu)



The manufacturer reserves the right to change the specifications and technical data of devices.  
Product images are for illustrative purposes only and may differ from the actual product.  
U-INTAUTOMATION-EN0821

## 30 YEARS OF EXPERIENCE

Professional protection of every type of building, as well as people staying in it, owing to advanced, yet functional and economical solutions – in these few words you can briefly describe the mission of SATEL, a manufacturer of security systems with 100% Polish capital involvement. Due to reliability in business and special focus on high quality and a wide range of products, the SATEL brand has been widely recognized in the industry for 30 years.

This management philosophy and the hard work of over 350 SATEL employees give tangible results. The wide product portfolio, covering over 400 items, provides countless possibilities of creating alarm, home automation, fire alarm, access control and monitoring systems tailored to the individual needs of each user. At the same time, these systems meet the requirements of Polish and international regulations as well as industry standards.

One of SATEL's main goals is adjusting the functionality of devices, with the use of the latest technologies, to meet current requirements and expectations of the market. For this reason, the company's design and production departments are continuously being modernized and expanded. A natural consequence of all measures aimed at manufacturing the highest quality devices was the implementation in 2002 of a quality management system based on the ISO 9001 standard. Notwithstanding this certification, SATEL also conducts a full functional test of all products leaving the production line, thus guaranteeing reliability of the manufactured devices. Owing to its focus on modern style as well as commitment to the highest level of quality and functionality of products, SATEL has won many satisfied customers not only in Poland, but also in over 50 markets worldwide.