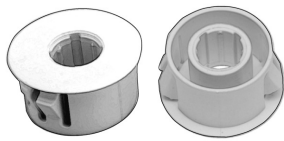


## Installation Instruction

Article-Name.: Kit metall pour EMK 46

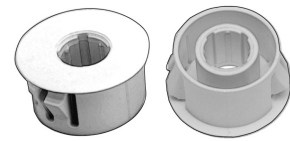


31015200.Y102

271

## Installation Instruction

Article-Name.: Kit metall pour EMK 46

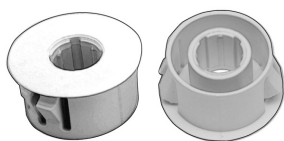


31015200.Y102

271

## Installation Instruction

Article-Name.: Kit metall pour EMK 46

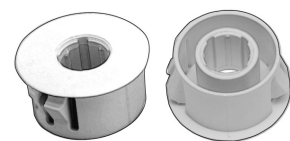


31015200.Y102

271

## Installation Instruction

Article-Name.: Kit metall pour EMK 46



31015200.Y102

271

**Description****EMK mounting kit EF 8/20**

This mounting kit is special designed for doors made from iron. The disposition in aluminium and plastic doors and windows is possible.

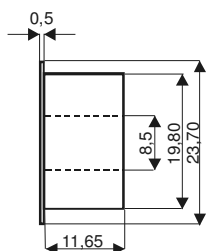
**Installation:**

Drill a hole with 20mm diameter at the selected spot. If applicable, chamfare the hole, so that the mounting kit can be inserted straight and nonviolent. Press with the thumb to fix it at the hole. No other tools are required. Do not use a hammer! The claws at the mounting kit will fix it at the spot (please note the material thickness; look at the specifications). A later turning or correction is after the fixation not possible.

By installing a magnet or magnet contact with the dimension 8 x 40 mm into the mounting kit the guides must be used. So it is possible to install the magnet or magnetic contact smooth running. By installing a magnetix contact not smooth running (canted) it is possible to destroy the sensible contact.

For the save functionality connected to the system is the fitter responsible. Check the function of the magnetic contact at the mounting place.

**Attention: Please note basically, that the ferromagnetic materials at the installation place changes the magnetic field. So the distances from the magnetic contact are can be changed.**

**Graphic profile:**

31015200.Y102

**Technical data:**

plastic material: PA6 GF 30  
 external diameter with out claws: Ø 19,80 mm  
 deepness muff: 11,65 mm  
 allowed material thickness for installation: 0,5 - 2,3 mm  
 hole diameter for the muff: Ø 20,00 mm

Technical changes without prior notice possible

**Description****EMK mounting kit EF 8/20**

This mounting kit is special designed for doors made from iron. The disposition in aluminium and plastic doors and windows is possible.

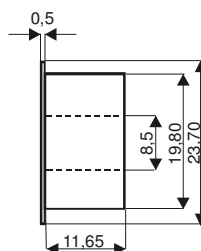
**Installation:**

Drill a hole with 20mm diameter at the selected spot. If applicable, chamfare the hole, so that the mounting kit can be inserted straight and nonviolent. Press with the thumb to fix it at the hole. No other tools are required. Do not use a hammer! The claws at the mounting kit will fix it at the spot (please note the material thickness; look at the specifications). A later turning or correction is after the fixation not possible.

By installing a magnet or magnet contact with the dimension 8 x 40 mm into the mounting kit the guides must be used. So it is possible to install the magnet or magnetic contact smooth running. By installing a magnetix contact not smooth running (canted) it is possible to destroy the sensible contact.

For the save functionality connected to the system is the fitter responsible. Check the function of the magnetic contact at the mounting place.

**Attention: Please note basically, that the ferromagnetic materials at the installation place changes the magnetic field. So the distances from the magnetic contact are can be changed.**

**Graphic profile:**

31015200.Y102

**Technical data:**

plastic material: PA6 GF 30  
 external diameter with out claws: Ø 19,80 mm  
 deepness muff: 11,65 mm  
 allowed material thickness for installation: 0,5 - 2,3 mm  
 hole diameter for the muff: Ø 20,00 mm

Technical changes without prior notice possible

**Description****EMK mounting kit EF 8/20**

This mounting kit is special designed for doors made from iron. The disposition in aluminium and plastic doors and windows is possible.

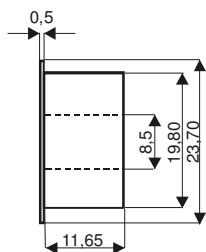
**Installation:**

Drill a hole with 20mm diameter at the selected spot. If applicable, chamfare the hole, so that the mounting kit can be inserted straight and nonviolent. Press with the thumb to fix it at the hole. No other tools are required. Do not use a hammer! The claws at the mounting kit will fix it at the spot (please note the material thickness; look at the specifications). A later turning or correction is after the fixation not possible.

By installing a magnet or magnet contact with the dimension 8 x 40 mm into the mounting kit the guides must be used. So it is possible to install the magnet or magnetic contact smooth running. By installing a magnetix contact not smooth running (canted) it is possible to destroy the sensible contact.

For the save functionality connected to the system is the fitter responsible. Check the function of the magnetic contact at the mounting place.

**Attention: Please note basically, that the ferromagnetic materials at the installation place changes the magnetic field. So the distances from the magnetic contact are can be changed.**

**Graphic profile:**

31015200.Y102

**Technical data:**

plastic material: PA6 GF 30  
 external diameter with out claws: Ø 19,80 mm  
 deepness muff: 11,65 mm  
 allowed material thickness for installation: 0,5 - 2,3 mm  
 hole diameter for the muff: Ø 20,00 mm

Technical changes without prior notice possible

**Description****EMK mounting kit EF 8/20**

This mounting kit is special designed for doors made from iron. The disposition in aluminium and plastic doors and windows is possible.

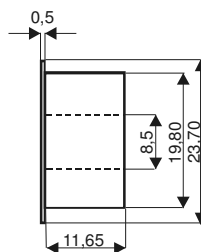
**Installation:**

Drill a hole with 20mm diameter at the selected spot. If applicable, chamfare the hole, so that the mounting kit can be inserted straight and nonviolent. Press with the thumb to fix it at the hole. No other tools are required. Do not use a hammer! The claws at the mounting kit will fix it at the spot (please note the material thickness; look at the specifications). A later turning or correction is after the fixation not possible.

By installing a magnet or magnet contact with the dimension 8 x 40 mm into the mounting kit the guides must be used. So it is possible to install the magnet or magnetic contact smooth running. By installing a magnetix contact not smooth running (canted) it is possible to destroy the sensible contact.

For the save functionality connected to the system is the fitter responsible. Check the function of the magnetic contact at the mounting place.

**Attention: Please note basically, that the ferromagnetic materials at the installation place changes the magnetic field. So the distances from the magnetic contact are can be changed.**

**Graphic profile:**

31015200.Y102

**Technical data:**

plastic material: PA6 GF 30  
 external diameter with out claws: Ø 19,80 mm  
 deepness muff: 11,65 mm  
 allowed material thickness for installation: 0,5 - 2,3 mm  
 hole diameter for the muff: Ø 20,00 mm

Technical changes without prior notice possible