

Using an Automatic Number Plate Reader (ANPR).

Overview

An ANPR system uses an infrared camera to read the vehicle number plate, process the information and then pass the details via a 26 bit Wiegand output to the Net2 ACU reader port.

Enter the user's number plate details into their Net2 user record. When the vehicle plate has been read by the ANPR, access is then granted as appropriate and the event logged by Net2.

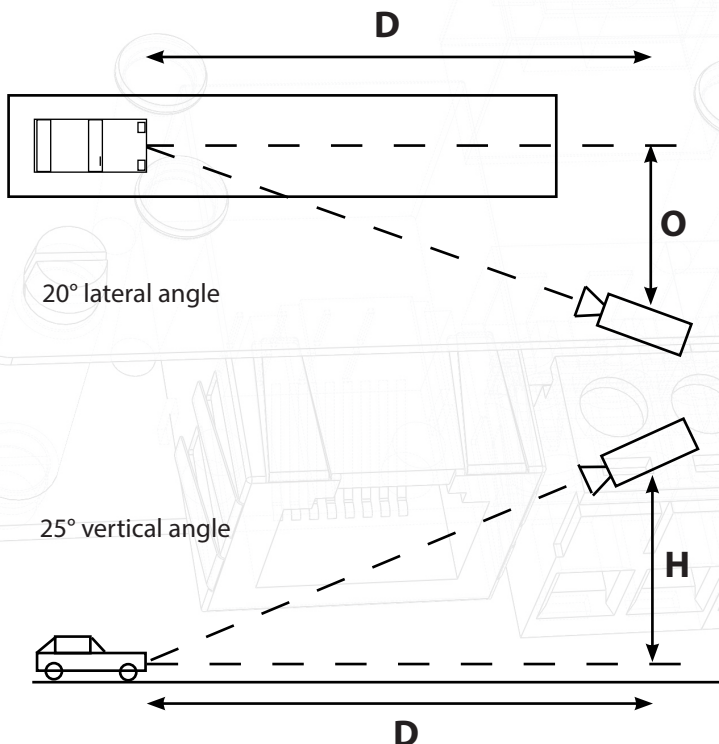


Site suitability

- The camera is sited 3 to 6 metres from the required read location.
- The lane width is no wider than 3.5 metres.
- The vertical camera angle does not exceed 25° or the lateral angle 20°.
- Vehicle headlights are not directly pointing into the lens.
- There is a clear view of the number plate without any temporary or permanent obstacles. (e.g. Waiting, passing or parked vehicles, barriers and bollards)
- The sun is not directly behind the subject and reflections from the number plate will not dazzle the camera.

Viewing angle

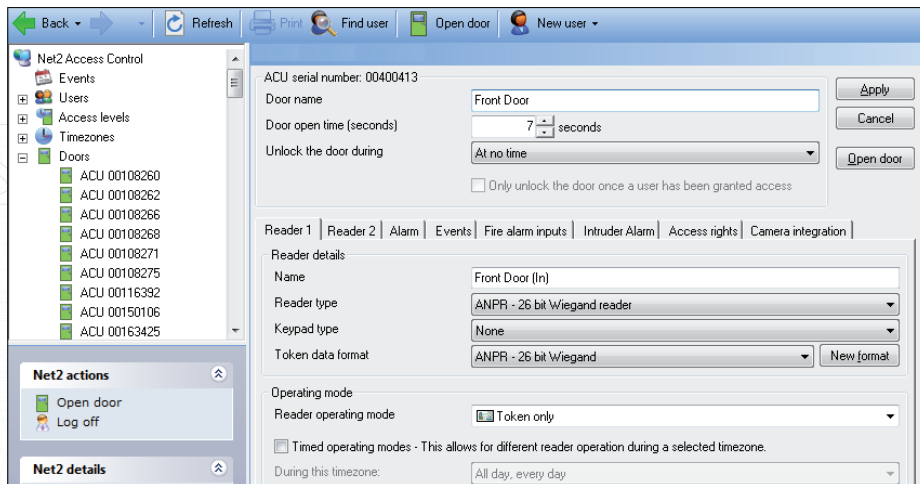
To reduce distortion of the number plate as it passes the cameras field of view, the following recommendations should apply. The maximum camera offset from the vehicle centre line can be found in the tables.



| Calculated distances at 20° | |
|-----------------------------|---|
| Vehicle distance (D) | Maximum offset from the centre line (O) |
| 3 m | 1.1 m |
| 6 m | 2.2 m |

| Calculated distances at 25° | |
|-----------------------------|--|
| Vehicle distance (D) | Maximum height above the centre line (H) |
| 3 m | 1.4 m |
| 6 m | 2.8 m |

Configuring - Net2 software (v4.13 or later)



Run the Net2 software and select the ACU and reader port where the camera is connected.

Set the Reader operating mode to 'ANPR - 26 bit Wiegand Reader'. The 'Token data format' will then also display ANPR - 26 bit Wiegand automatically.

The user record requires the number plate details to be added. Select the user, click on 'New token' and select 'Vehicle number plate'. Enter the details (no spaces necessary) and click OK. Click Apply on the record to accept the new token.

