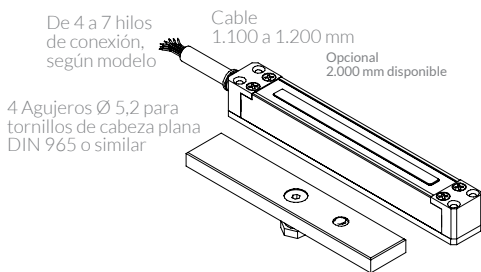


ME500 Y ME510

INSTRUCCIONES SERIE ME

Diseñado para instalar en la intemperie, IP65 totalmente protegido de los agentes atmosféricos, lluvia, nieve, hielo, etc.

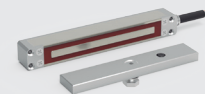
Aplicaciones: Buques, balnearios, estadios, piscinas, saunas, puertas, aeropuertos, estaciones ferroviarias, grandes empresas, etc.



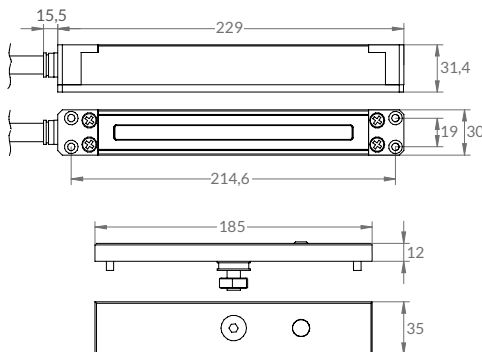
Sólo
30 MM
de alto

IP65

SIN
magnetismo
residual



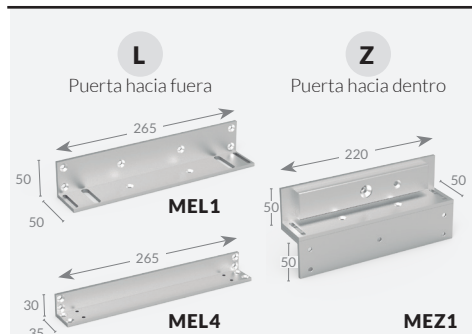
IP65
Resistente al agua



CARACTERÍSTICAS TÉCNICAS

Fuerza de cierre:	2.500 N
Voltaje:	12-24 V DC
Consumo:	500 mA / 250 mA
Potencia:	6 W
Señalización:	REED (Sólo ME510)
Cable:	1.100 a 1.200 mm
Instalación:	Superficie
Peso Magnet:	1.180 kg (ME500) 1.250 kg (ME510)
Peso Contraplaca:	0.585 kg
Fijación:	Frontal
Acabado:	Cromado

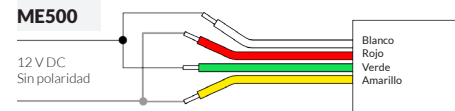
ESCUADRAS COMPATIBLES



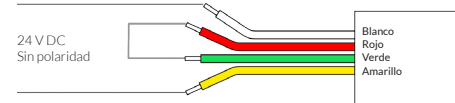
CONEXIONADO ELÉCTRICO

ME500

12 V DC
Sin polaridad

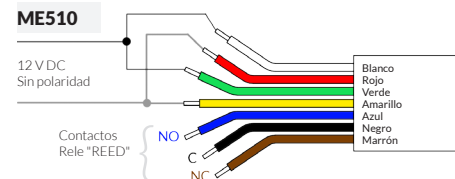


24 V DC
Sin polaridad

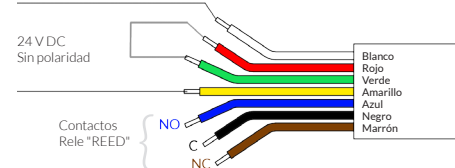


ME510

12 V DC
Sin polaridad



24 V DC
Sin polaridad



OPENERS & CLOSERS se reserva el derecho de cambiar y/o modificar las características, especificaciones técnicas y colores de los modelos sin previos visos, con la finalidad de incorporar avances en su diseño y/o tecnología. OPENERS & CLOSERS excluye toda responsabilidad de los daños y perjuicios de todo tipo que pueda ocasionar el presente documento técnico realizado con fines meramente orientativos. Se prohíbe la reproducción traducción, incluso parcial, del presente documento, así como la utilización del sistema de numeración de referencias sin la autorización previa y por escrito de OPENERS & CLOSERS. Enero 2018



OPENERS & CLOSERS*
Secure locking solutions

ME500&ME510

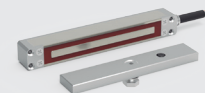
INSTRUCTIONS SERIES ME

It is a suitable product for outdoor installations.

Only
30 MM
height

IP65

no residual
magnetism



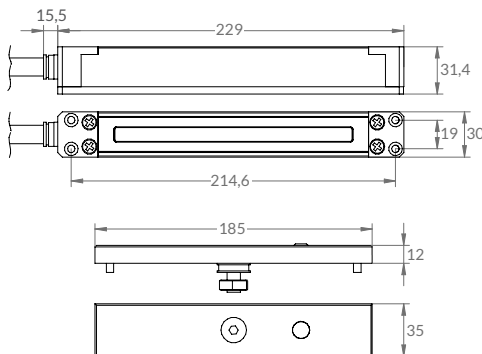
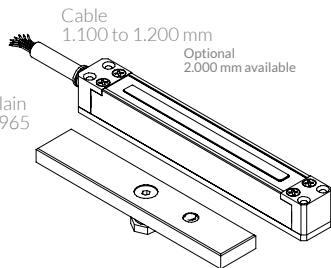
IP65
Waterproof

With IP65 for in areas with increased humidity or on saline atmospheres such as *Harbours, Boats, Stadiums, Airports, Railways Stations, Industries and more.*

4 or 7 conductors depending on the model

Cable
1.100 to 1.200 mm
Optional
2.000 mm available

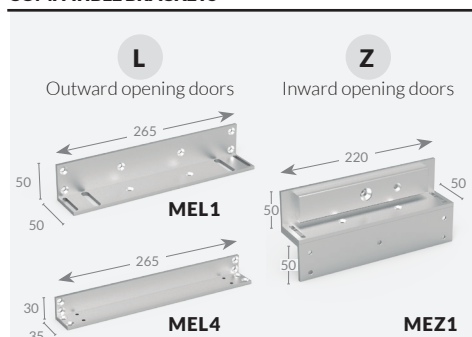
4 drills Ø 5,2 for plain faced screw (DIN 965 or similar)



TECHNICAL FEATURES

Holding force:	2.500 N
Voltage:	12-24 V DC
Consumption:	500 mA / 250 mA
Power:	6 W
Signalling :	REED (Only ME510)
Cable:	1.100 to 1.200 mm
Installation:	Surface
Magnet weight:	1.180 kg (ME500) 1.250 kg (ME510)
Armature weight:	0.585 kg
Fitting system:	Frontal
Finish:	Chrome

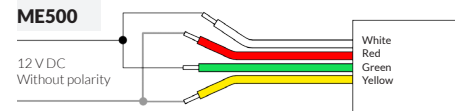
COMPATIBLE BRACKETS



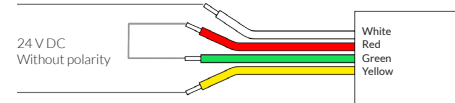
ELECTRICAL CONNECTION

ME500

12 V DC
Without polarity

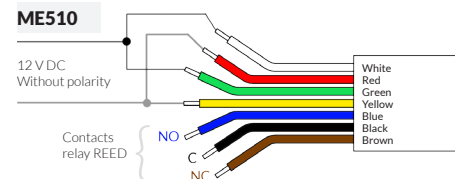


24 V DC
Without polarity

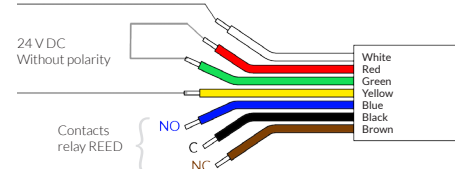


ME510

12 V DC
Without polarity



24 V DC
Without polarity



OPENERS & CLOSERS reserves the right to change and/or modify features, specifications and colors of the model without prior notice, in order to incorporate advances in design and/or technology. OPENERS & CLOSERS excludes all liability for damages of any kind that may cause this white paper undertaken for guidance only. Reproduction or translation, even partial, of this document and use the numbering system of references, without the prior written permission of OPENERS&CLOSERS S.L is prohibited. January 2018



OPENERS & CLOSERS®
Secure locking solutions